

EXECUTIVE DECISION DAY NOTICE

Executive Lead Member for Children's Services Decision Day

Date and Time Wednesday 10th November 2021 at 2.00pm

Place Remote Meeting

Enquiries to members.services@hants.gov.uk

Carolyn Williamson FCPFA
Chief Executive
The Castle, Winchester SO23 8UJ

FILMING AND BROADCAST NOTIFICATION

This decision day is being held remotely and will be recorded and broadcast live via the County Council's website.

AGENDA

DEPUTATIONS

To receive any deputations notified under Standing Order 12.

KEY DECISIONS (NON-EXEMPT/NON-CONFIDENTIAL)

1. **POULNER INFANT SCHOOL** (Pages 3 - 20)

KEY DECISIONS (EXEMPT/CONFIDENTIAL)

Not Applicable.

NON KEY DECISIONS (NON-EXEMPT/NON-CONFIDENTIAL)

2. **HOLIDAY ACTIVITY AND FOOD (HAF) GRANT RECOMMENDATIONS CHRISTMAS 2021** (Pages 21 - 40)
3. **EXPANSION OF MARK WAY SCHOOL, ANDOVER** (Pages 41 - 50)
4. **THE FUTURE OF HATHERDEN CHURCH OF ENGLAND PRIMARY SCHOOL** (Pages 51 - 64)
5. **NORTH BADDESLEY INFANT SCHOOL AGE RANGE** (Pages 65 - 78)

NON KEY DECISIONS (EXEMPT/CONFIDENTIAL)

Not Applicable.

ABOUT THIS AGENDA:

On request, this agenda can be provided in alternative versions (such as large print, Braille or audio) and in alternative languages.

ABOUT THIS MEETING:

The press and public are welcome to observe the public sessions of the decision day via the webcast.

HAMPSHIRE COUNTY COUNCIL

Decision Report

Decision Maker:	Executive Lead Member for Children's Services
Date:	10 November 2021
Title:	Poulner Infant School – Replacement Nursery
Report From:	Director of Culture, Communities and Business Services

Contact names:		Steve Clow and Bob Wallbridge	
Tel:	03707 798845 03707 794084	Email:	steve.clow@hants.gov.uk bob.wallbridge@hants.gov.uk

Purpose of this Report

1. The purpose of this report is to seek spend approval to the project proposals at Poulner Infant School and Nursery to construct a new nursery and remodel existing spaces vacated as a result.

Recommendations

2. That the Executive Lead Member for Children's Services grants spend approval to the project proposals for Poulner Infant School at the total cost of £537,000

Executive Summary

3. Poulner Infant School and Nursery currently provides education for up to 246 children (2 Forms of Entry) aged between 2 and 7 years old. This includes the school run nursery provision.
4. The project comprises of a new, purpose built 26 place nursery to replace an existing setting within the infant school. The accommodation released upon completion is to be used as additional and improved teaching space for the school.
5. The project is included in the Children Services Capital Programme, approved at the Executive Lead Member for Children's Services Decision Day on 16th January 2020 with a budget of £487,000.
- 6.

Following approval of the capital programme in January 2020, the cost of the scheme has increased by £50,000 due to the increased scope of the proposed works. This additional cost will be funded by an increase in the funding as shown in the table below.

7. A Planning application was submitted in September 2021 and a decision is expected in December.

Background

8. Poulner Infant School and Nursery provides education for children aged between 2 and 7 years old. There are currently 246 pupils on roll. The numbers attending the school are not currently planned to increase as a result of these proposals.
9. The project is included in the Children's Services Capital Programme, approved at the Executive Lead Member for Children's Services decision day on January 16, 2020, which outlines the available budget for the project.
10. The Section 106 Agreement for the development at Crow Arch Lane, Ringwood has secured a contribution for educational improvements in the sum of £487,000 and this forms part of the funding for the proposed project, as shown in the table below.
11. The original school is of SCOLA 2 construction, built in 1971. The school has previously been extended with the addition of classrooms, a staffroom and office spaces. In addition, there are several sheds and containers on the site. The current nursery occupies a former classroom constructed around the year 2000 on the southern edge of the existing school.
12. The proposals seek to address shortcomings in the existing accommodation and provide additional and improved teaching space for the school as well as bespoke new accommodation for the existing nursery provision.

Finance

13. Capital Expenditure:
The Capital Expenditure has already been approved in principle; the following table outline the breakdown of its distribution across the project.

Capital Expenditure	Current Estimate £'000	Capital Programme £'000
Buildings	461	461
Fees	76	76
Total	537	537

14. Sources of Funding

Financial Provision for Total Scheme	Buildings £'000	Fees £'000	Total Cost £'000
1. From Own Resources			
a) Capital Programme	43	7	50
2. From Other Resources			
a) Developer Contributions	418	69	487
Total	461	76	537

i. *Building Cost:*

Net Cost - not applicable due to the nature of the works

Gross Cost - £3,064 per sqm

Cost Per Pupil Place = N/A

ii. *Furniture & Equipment:* Included in the above figures is an allocation of £16,400 for the provision of all loose furniture, fittings, equipment and I.T. (inclusive of fees)

iii. *School Balances:*

The school has the following level of balances:

Published revenue balance as at 31 March 2021: £3,270

Devolved capital as at 31 March 2019: £1,336

Revenue Issues:

iv. *Overview of Revenue Implications:*

	(a) Employees £'000	(b) Other £'000	(a+b) *Net Current Expenditure £'000	(c) Capital Charges £'000	(a + b + c) Total Net Expenditure £'000
Revenue Implications Additional + / Reductions	-	-	0	30	30

Details of Site and Existing Infrastructure

15. Poulner Infant School is situated in a suburb of Ringwood in south-west Hampshire and close to the western boundary of New Forest National Park. The site is within the Ringwood North ward of New Forest District Council.

16. The original infant school is of SCOLA 2 construction, built in 1971, the existing building is single storey. Elevations are a mix of traditional masonry with timber cladding and painted metal windows. The nursery occupies an extension that

was built around 2000. This is constructed of a mix of traditional masonry and glass with a roof supported on exposed timber beams. The existing nursery is linked to the original school by a glazed lobby

17. The infant school occupies a site of approximately 1 hectare. It is bounded by a mixture of mature and semi-mature trees and shrubs. There are no significant changes of level nor significant ecological features. The school's western boundary is shared with Poulner Junior School and the northern and eastern boundaries are contained by North Poulner Road and Gorley Road respectively. Gardens of residential properties enclose the school's southern boundary.
18. The existing services infrastructure to the site are sufficient to accommodate the project proposals.

Scope of the Project

19. The proposed works at the infant school comprises of the construction of a new purpose-built nursery. This will replace a 26-place nursery that already exists within the infant school site. The space liberated will be returned to teaching space for the use of the infant school. The purpose-built building will be stand-alone located in the grounds of the infant school.

The Proposed Building

20. The proposed new building will comprise:
 - Secure entrance lobby with reception desk
 - Learning and play space
 - Combined administration office/ meeting room/ consultation room
 - Pupil toilets with pupil changing space
 - Accessible toilet for staff and visitors
 - Kitchen, storage, and plant room
21. The proposed nursery building is expected to be of a framed construction with a mix of insulated render panels and glazing to the façade.

External Works

22. The proposed external works comprise:
 - Secure and segregated pedestrian entrance courtyard with provision for bicycle and scooter storage
 - Secure outdoor play space with hard and soft landscaping
 - Canopy structure for rain protection and shading to outdoor play area
23. As there is no increase in staff or pupils, the project will not provide additional car parking on the school site.

24. The vehicular entrance to the infant school will remain unchanged but it is proposed that a new opening be formed in the school's eastern boundary to provide a secure and dedicated pedestrian entrance to the nursery setting.

Planning

25. A planning application was submitted in September 2021

Construction Management

26. The school site will remain in use during the construction period and local management arrangements will be put in place to manage the health and safety impact for all school users. The contractor will access the school site via a temporary entrance formed off Gorley Road. Contractor access and working areas will be segregated from the school users.
27. No deliveries or movements of vehicles will take place at the start or end of the school day, in order to avoid traffic conflict when pupils are arriving at or departing from the school.
28. The works will be procured through an open competitive tender and are anticipated to commence on site in the spring of 2022 with the new building completing in the autumn of 2022.

Building Management

29. The existing building management arrangements will remain in place.

Professional Resources

- | | |
|--------------------------|--|
| 30. Architectural – | Culture, Communities & Business Services |
| Landscape – | Culture, Communities & Business Services |
| Mechanical & Electrical- | Culture, Communities & Business Services |
| Structural Engineering - | Culture, Communities & Business Services |
| Quantity Surveying - | Culture, Communities & Business Services |
| Principal Designer - | Culture, Communities & Business Services |
| Drainage Engineering - | Economy, Transport and Environment |

Consultation and Equalities

31. The following have been consulted during the development of this project and feedback can be seen in overview in Appendix A:

Headteacher
School Governors
Children's Services
Executive Lead Member for Children's Services
Local County Councillor
Fire Officer
Access Officer
HCC Regulatory Planning & Transport Teams

Risk & Impact Issues

Fire Risk Assessment

32. With respect to fire safety and property protection, the proposals have been risk assessed in line with the agree Property Services procedures and confirmed that the provision of sprinklers is not required in this instance.
33. The proposals will meet the requirements of the Building Regulations (BB100 Fire Safety in Schools), including enhancements beyond minimum provision, and are consistent with current fire safety legislation, the partnership arrangement with Hampshire Fire and Rescue Services, and are in line with the County Council's policy to manage corporate risk.

Health and Safety

34. Design risk assessments, pre-construction health & safety information and Health & Safety File will be produced and initiated in accordance with the Construction design and Management Regulations for the proposed scheme.

Climate Change

35. Hampshire County Council utilises two decision-making tools to assess the carbon emissions and resilience of its projects and decisions. These tools provide a clear, robust, and transparent way of assessing how projects, policies and initiatives contribute towards the County Council's climate change targets of being carbon neutral and resilient to the impacts of a 2°C temperature rise by 2050. This process ensures that climate change considerations are built into everything the Authority does.
36. The Adaptation Project Screening Tool identifies that in extreme circumstances, strong winds, storm events and heat waves arising from Climate Change in the future, could have the potential to affect the use of the building, but generally the scheme is considered to have low vulnerability to climate change.
37. The project will incorporate the following features to reduce energy consumption and mitigate the impact of climate change:
 - A highly insulated building envelope for the extension including high performance windows, doors, and roof lights
 - Provision of good levels of day lighting to all teaching areas to reduce the need for artificial lighting and energy use.
 - Provision of an air source heat pump to provide carbon emission-free heating and hot water
 - Natural ventilation to main spaces with night-time cooling strategy.
 - Solar controlled glass will be installed to south facing windows to assist in the control of solar gain.
 - Strategic placement of extended roof canopies above large glazing areas to avoid summertime overheating.

- Energy efficient lighting and heating controls
- The use of timber from sustainable sources
- A site waste management plan will be developed to ensure that during construction the principles of minimising waste are maintained.

38. The project is important for meeting Hampshire County Councils' strategic priorities, including economic growth and contributing towards strong, resilient, and inclusive communities

REQUIRED CORPORATE AND LEGAL INFORMATION:

Links to the Strategic Plan

Hampshire maintains strong and sustainable economic growth and prosperity:	Yes
People in Hampshire live safe, healthy, and independent lives:	Yes
People in Hampshire enjoy a rich and diverse environment:	Yes
People in Hampshire enjoy being part of strong, inclusive communities:	Yes

Section 100 D - Local Government Act 1972 - background documents

The following documents discuss facts or matters on which this report, or an important part of it, is based and have been relied upon to a material extent in the preparation of this report. (NB: the list excludes published works and any documents which disclose exempt or confidential information as defined in the Act.)

Document

Location

None

EQUALITIES IMPACT ASSESSMENT:

1. Equality Duty

The County Council has a duty under Section 149 of the Equality Act 2010 ('the Act') to have due regard in the exercise of its functions to the need to:

- Eliminate discrimination, harassment and victimisation and any other conduct prohibited by or under the Act with regard to the protected characteristics as set out in section 4 of the Act (age, disability, gender reassignment, marriage and civil partnership, pregnancy and maternity, race, religion or belief, sex and sexual orientation).
- Advance equality of opportunity between persons who share a relevant protected characteristic within section 149(7) of the Act (age, disability, gender reassignment, pregnancy and maternity, race, religion or belief, sex and sexual orientation) and those who do not share it;
- Foster good relations between persons who share a relevant protected characteristic within section 149(7) of the Act (see above) and persons who do not share it.

Due regard in this context involves having due regard in particular to:

- The need to remove or minimise disadvantages suffered by persons sharing a relevant protected characteristic that are connected to that characteristic;
- Take steps to meet the needs of persons sharing a relevant protected characteristic that are different from the needs of persons who do not share it;
- Encourage persons sharing a relevant protected characteristic to participate in public life or in any other activity in which participation by such persons is disproportionately low.

2. Equalities Impact Assessment:

Please see Appendix B for the Equalities Impact Assessment Page

FEEDBACK FROM CONSULTEES:**OTHER EXECUTIVE MEMBERS:**

Executive Member & Portfolio	Reason for Consultation	Date Consulted	Response:
Executive Lead Member for Children's Services.	Portfolio Holder		

OTHER FORMAL CONSULTEES:

Member/ Councillor	Reason for Consultation	Date Consulted	Response:
Councillor Michael Thierry	Local Member for Poulner briefed on proposals.	15/10/21	Supports the Proposals



Equality Impact Assessment

What is an Equality Impact Assessment (EIA) and why does the County Council do them?

The [Public Sector Equality Duty](#) (PSED) is an obligation within the [Equality Act 2010](#) ("the Act"), which asks public authorities, like Hampshire County Council, to give 'due regard' to equality considerations, in particular to:

- Eliminate unlawful discrimination, harassment and victimisation and other conduct prohibited by the Act.
- Advance equality of opportunity between people who share a protected characteristic and those who do not.
- Foster good relations between people who share a protected characteristic and those who do not.

This includes assessing the impact of policies and practices on individuals and communities with a protected characteristic, as defined in the Act and some other specific groups. The County Council uses EIAs to ensure it has paid 'due regard' to equalities considerations when there are changes to a service or policy, a new project or certain decisions.

EIA author	Position & Department	Contact
Gemma Bowry	Strategic Development Officer Children's Services	gemma.bowry@hants.gov.uk Tel:

Title:	Poulner Infant School - Replacement Nursery
Related EIAs:	None

EIA for Savings Programme:	No
Service affected	Nursery provision onsite at Poulner Infant School
Description of the service/policy/project/project phase	Replacement of the existing onsite nursery at Poulner Infant School.
New/changed service/policy/project	Hampshire County Council is proposing to provide a new, purpose built 26 place nursery to replace an existing setting within the grounds of Poulner infant school. The accommodation released upon completion is to be used as additional and improved teaching space for the school.

Engagement
A formal consultation took place between the school's head teacher and the governing body.

Equalities considerations - Impact Assessment

Age

Impact on public	Neutral
Impact on staff	Neutral
Rationale	There will be a neutral impact for both public and staff in relation to this characteristic.
Mitigation	

Disability

Impact on public	Positive
Impact on staff	Positive
Rationale	The proposals will provide additional and improved teaching space for the school as well as bespoke new accommodation for the existing nursery provision. The accommodation will be fully accessible, meeting current building regulations and internal standards put in place by the specialist access team within Hampshire County Councils Property Services department.
Mitigation	

Gender Reassignment

Impact on public	Neutral
Impact on staff	Neutral
Rationale	There will be a neutral impact for both public and staff in relation to this characteristic.
Mitigation	

Pregnancy and Maternity

Impact on public	Neutral
Impact on staff	Neutral

Rationale	There will be a neutral impact for both public and staff in relation to this characteristic.
Mitigation	

Race

Impact on public	Neutral
Impact on staff	Neutral
Rationale	There will be a neutral impact for both public and staff in relation to this characteristic.
Mitigation	

Religion or Belief

Impact on public	Neutral
Impact on staff	Neutral
Rationale	There will be a neutral impact for both public and staff in relation to this characteristic.
Mitigation	

Sex

--	--

Impact on public	Neutral
Impact on staff	Neutral
Rationale	There will be a neutral impact for both public and staff in relation to this characteristic.
Mitigation	

Sexual Orientation

Impact on public	Neutral
Impact on staff	Neutral
Rationale	There will be a neutral impact for both public and staff in relation to this characteristic.
Mitigation	

Marriage and Civil Partnership

Impact on public	Neutral
Impact on staff	Neutral
Rationale	There will be a neutral impact for both public and staff in relation to this characteristic.
Mitigation	

Poverty

Impact on public	Neutral
Impact on staff	Neutral
Rationale	There will be a neutral impact for both public and staff in relation to this characteristic.
Mitigation	

Rurality

Impact on public	Positive
Impact on staff	Positive
Rationale	A pressure on early years services has been identified within the area of Ringwood in the New Forest. The new nursery provision will contribute towards relieving this pressure.
Mitigation	

Geographical Impact: New Forest

Equality Statement

Additional information:

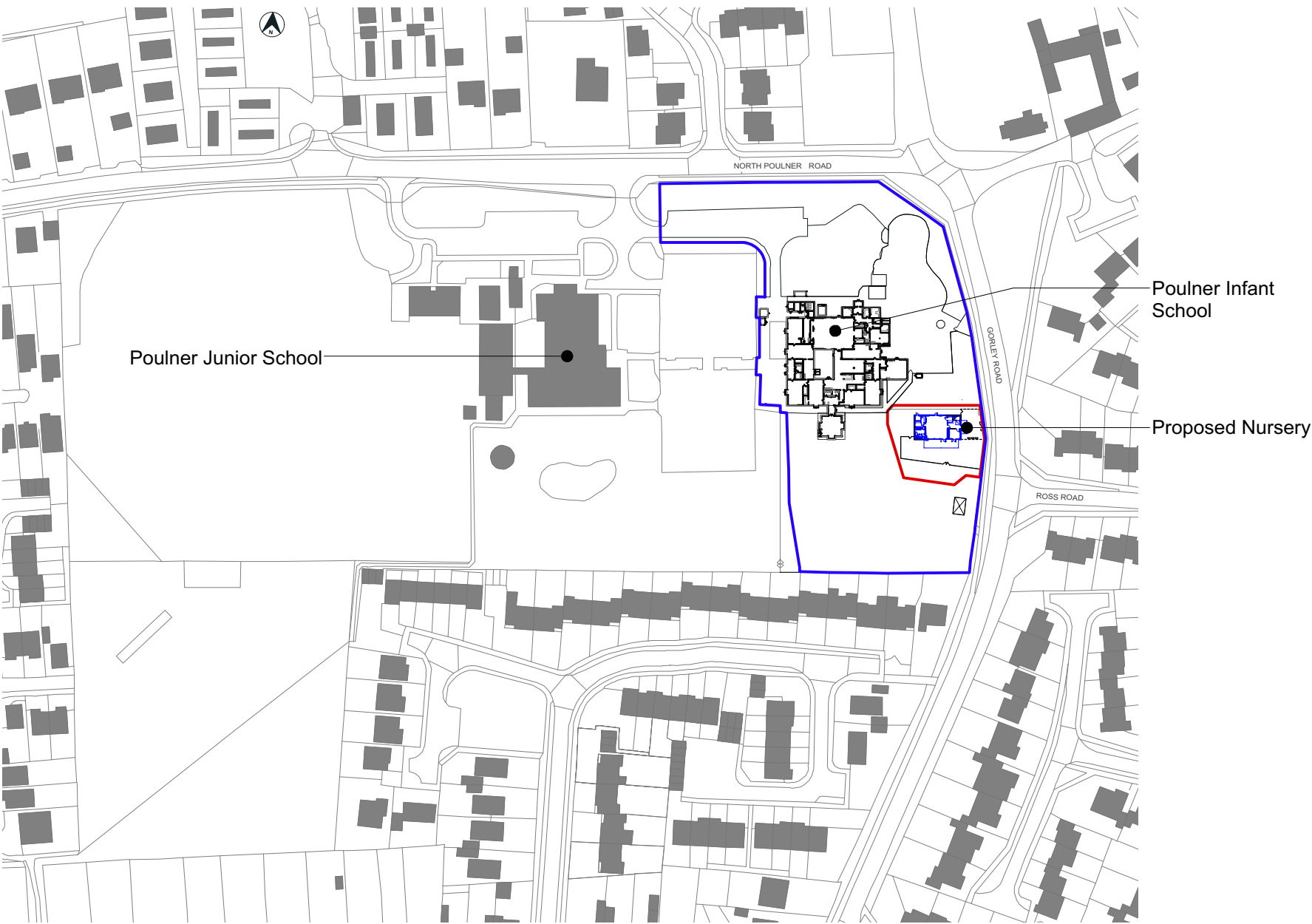
None

Overview Statement:

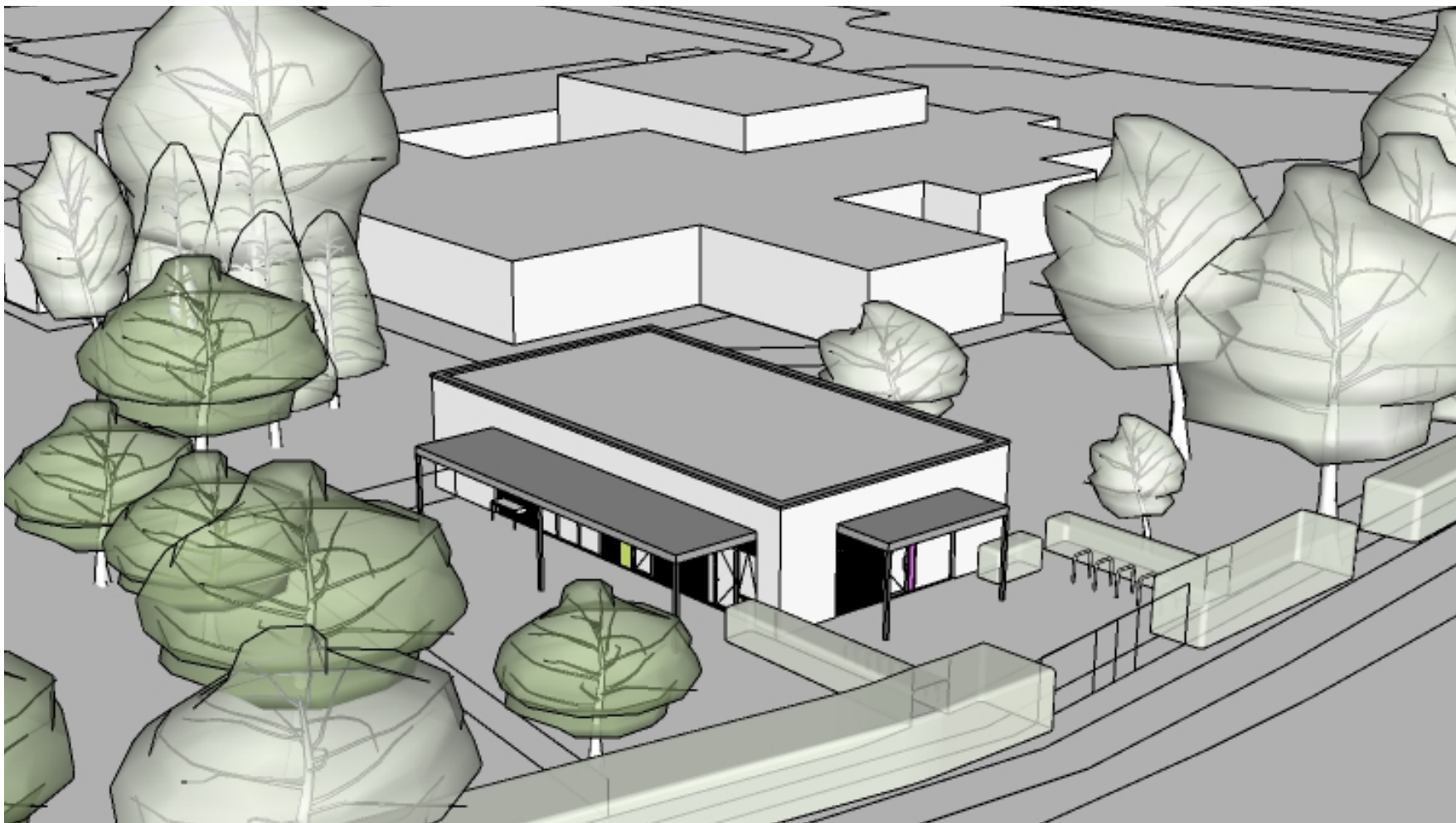
Assessment to show that due regard has been given and that there is no requirement for a full EIA:

EIA reference number: 00154

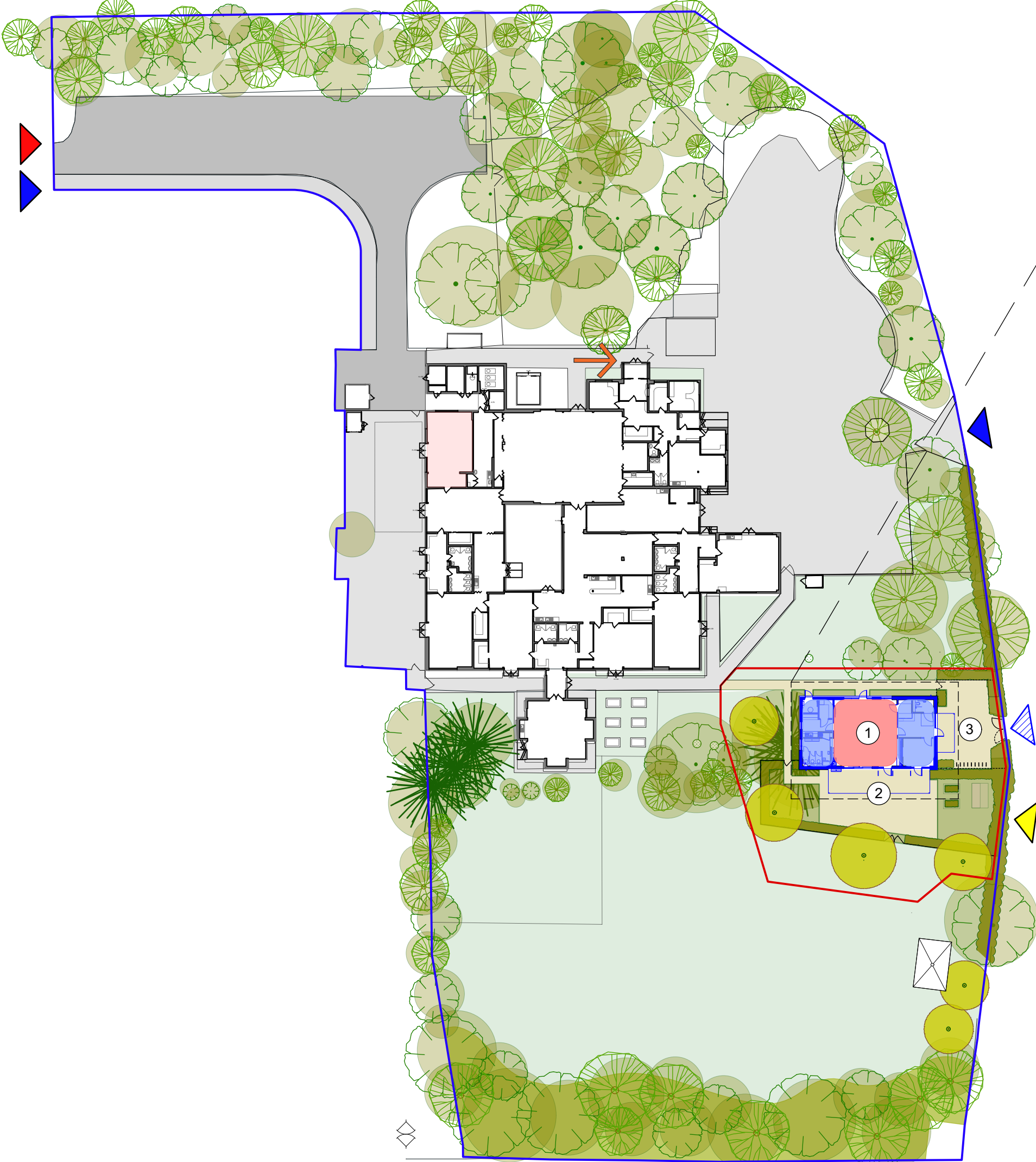
Date of production of EIA for publication: 01/11/2021



Location Plan 1:2000



Aerial view of Nursery and Infant School from south-east NTS



Proposed Site Plan 1:500

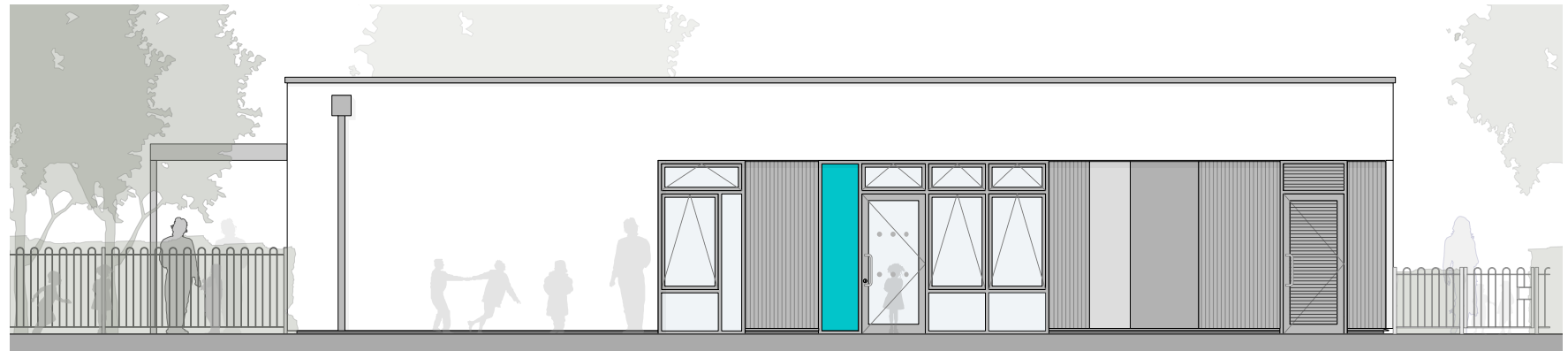
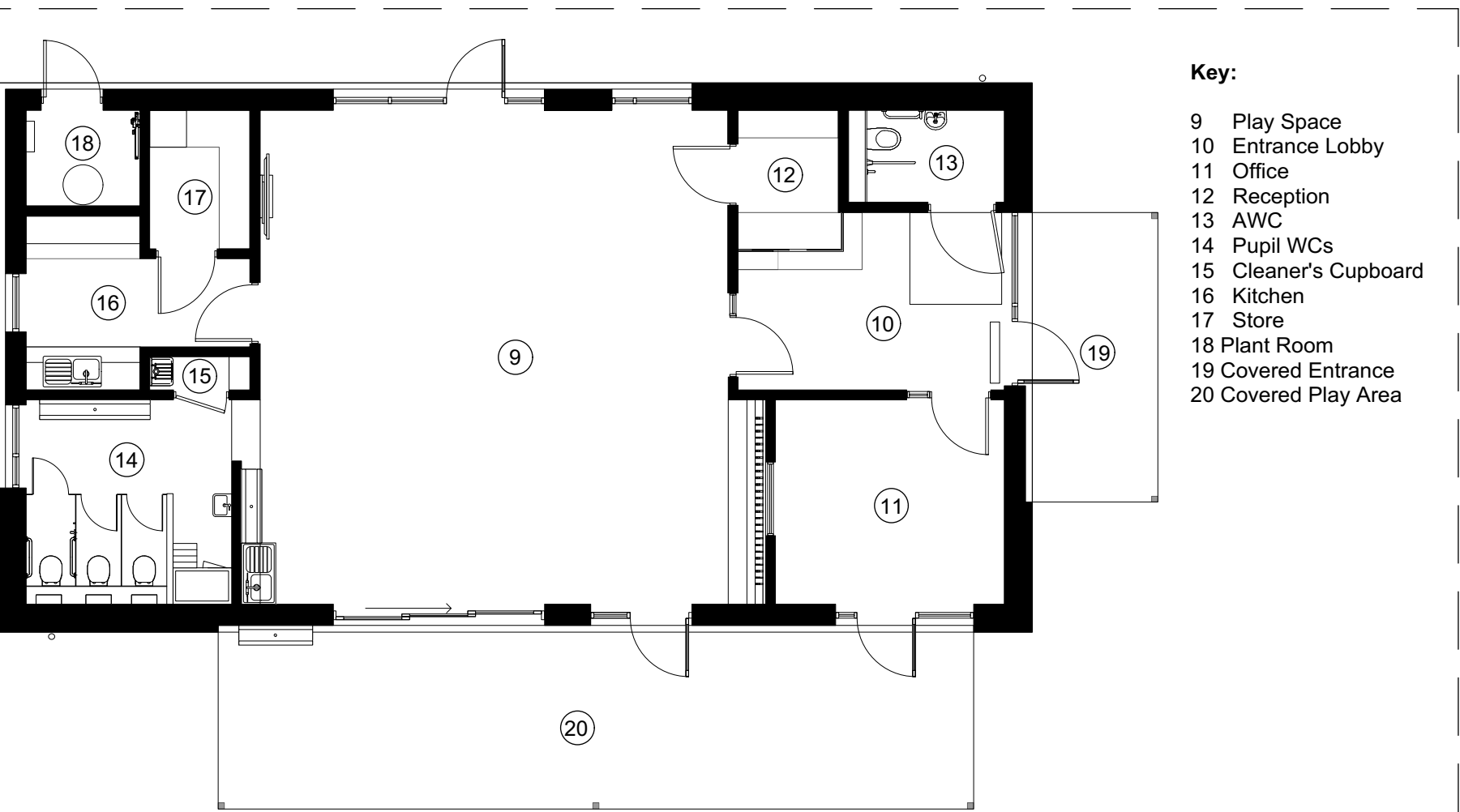
Proposed Site Plan Key:

- 1 Proposed Nursery
- 2 Proposed Nursery Hard Play
- 3 Proposed Nursery Entrance Courtyard

- Existing Pedestrian Access
- Proposed Pre-school Pedestrian Access
- Vehicular Access
- Contractor Access
- Main Entrance

- Development Boundary
- HCC Site Boundary
- Teaching - New Build
- Non Teaching - New Build
- Circulation - New Build
- Teaching - Refurbishment
- Non Teaching - Refurbishment
- Circulation - Refurbishment
- Not Affected

Infant School - Proposed Nursery 1:100



North Elevation of Proposed Nursery 1:100



West Elevation of Proposed Nursery 1:100



South Elevation of Proposed Nursery 1:100



East Elevation of Proposed Nursery 1:100

Rev	Description	Date	By	Chkd
P3	Project Appraisal	12/10/21	AT	MH
P2	Project Appraisal	27/07/21	AT	MH
P1	Project Appraisal	05/07/21	AT	MH

General Notes

- This drawing is © copyright Hampshire County Council 2019. No unauthorised reproduction of any kind is permitted.
- No dimensions to be scaled from this drawing. Verify all dimensions prior to construction. Immediately report any discrepancies on the document to the Architect/Contract Administrator. This document shall be read in conjunction with associated models, specifications and related consultant's documents.
- Drawing to be read with all relevant Architectural, Interiors, Structural, M&E, Drainage/Public Health, Landscape, Civils and Interiors drawings and specifications.
- This map is reproduced from Ordnance Survey material with the permission of Ordnance Survey on behalf of the controller of Her Majesty's Stationery Office © Crown copyright. Unauthorized reproduction infringes Crown Copyright & may lead to prosecution or civil proceedings (100019180) 2019.

HCC Property Services,
Three Minsters House,
76 High Street, Winchester SO23 8UL
tel: (01962) 847801

PROJECT NAME
Proposed Nursery
Poulner Infant School

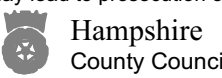
SHEET NAME
Project Appraisal

SCALE
VARIES

DRAWN **CHKD** **APRV**
AT **MH** **MH**

DRAWING No.
project code - originator - volume - level - type - role - number version
P12780-HCC-ZZ -00-DR-A-1010 P3 00

SUITABILITY
code description
S4 SUITABLE FOR STAGE APPROVAL



This page is intentionally left blank

HAMPSHIRE COUNTY COUNCIL

Decision Report

Decision Maker:	Executive Lead Member for Children's Services
Date:	10 November 2021
Title:	Holiday Activity and Food (HAF) Grant Recommendations Christmas 2021
Report From:	Director of Children's Services

Contact name: Suzanne Smith, Assistant Director, Children's Services

Tel: 01962 846270

Email: Suzanne.smith2@hants.gov.uk

Purpose of this Report

1. The purpose of this report is to seek approval for grant awards to organisations offering holiday activity and food schemes to benefits eligible Free School Meal (FSM) children during the Christmas 2021 school holidays, funded by the Department for Education's Holiday Activity and Food (HAF) programme.

Recommendation(s)

2. It is recommended that the Executive Lead Member approves the award of HAF Christmas grants to the organisations identified in Appendix 1 to this report up to a total value of £541,860.05.
3. It is recommended that the Executive Lead Member delegates approval to the Director of Children's Services to approve the reallocation of any HAF remaining or underspent funds, including up to £81,279 additional funds applied for to provide free places for other vulnerable children and young people, to organisations delivering services that meet the criteria of the grant set out in paragraph 19, in consultation with the Executive Lead Member. This may include new grants to partner organisations to supplement the HAF Christmas offer where gaps are identified at a local level.
4. It is recommended that the Executive Lead Member for Children's Services delegate approval to the Director of Children's Services to approve the allocation of HAF grant funds to partner organisations supporting the signposting HAF aim, up to a maximum of £35,000 to organisations delivering services that meet the criteria of the grant set out in paragraphs 19 and 20, in

consultation with the Executive Lead Member. This may include new grants to partner organisations to supplement the HAF Summer offer where gaps are identified.

Executive Summary

5. The Department for Education (DfE) has provided every local authority in England funding to coordinate free holiday provision, including healthy food and enriching activities for children eligible for benefits related free school meals. The programme covers the Easter, summer and Christmas holidays in 2021. Hampshire County Council (the Council) was awarded £3,319,940.
6. Between 26 July to 26 September 2021, the Council invited grant applications from organisations able to provide holiday activity and food schemes during the 2021 Christmas holidays 18 December to 3 January. Applications had to deliver to the DfE HAF programme outcomes identified in paragraph 19.
7. Under Type A grants (further described in paragraph 23), applications were received from 32 organisations for 72 projects. Under Type B (described in paragraph 23), applications were received from 17 organisations for 41 projects. These were evaluated by a panel of council officers, resulting in recommendations contained in this report for 113 separate grant awards up to a total value of £541,860.05.
8. The total value of applications requested exceeded the budget available. Feedback will be provided to unsuccessful applicants and to those where requests for funding were only partially recommended.
9. Some grant recommendations to projects may decrease following best value discussions with organisations which are currently underway.
10. Successful organisations will need to submit monitoring to the Council to ensure that the funding is reaching the target cohort of children and young people and that the provision is of good quality.
11. The future of the HAF programme is currently being discussed by Government, with any future funding being considered as part of the Comprehensive Spending Review.

Contextual information

12. On 8 November 2020, the Government announced that the HAF programme, which has provided healthy food and enriching activities to disadvantaged children since 2018, will be expanded across the whole of England in 2021. Grant allocations and requirements were published by the DfE on 8 February 2021.

13. The HAF programme covers the Easter, summer and Christmas holidays in 2021, and the DfE will make up to £220m available to local authorities for the programme. It will be available to children in every local authority in England and will build on the success of the local holiday programmes that the Government have been funding since 2018.
14. Hampshire County Council has been allocated funding of up to £3,319,940. The Council would like to provide free places for other vulnerable children and young people who do not quite meet the criteria for benefits-eligible free school meals, such as other children with SEND, looked after children and those open to social care, and as such has bid for the additional 15% funding offered by the DfE to supplement the HAF funded places that will be available at Christmas. The outcome of this bid will not be known until late October/early November and therefore delegated authority has been requested to allocate this funding in consultation with the Executive Lead Member.
15. School holidays can be particular pressure points for some families because of increased costs (such as food and childcare) and reduced incomes. For some children that can lead to a holiday experience gap - with children from disadvantaged families less likely to access organised out-of-school activities; more likely to experience 'unhealthy holidays' in terms of nutrition and physical health and are more likely to experience social isolation.
16. Free holiday clubs are a response to this issue and evidence suggests that they can have a positive impact on children and young people. It also shows they work best when they provide consistent and easily accessible enrichment activities, when they offer more than just breakfast or lunch, and when they involve children (and parents) in food preparation.
17. The aim of the HAF programme is to make free places available to children eligible for free school meals for the equivalent of at least four hours a day, four days a week and for six weeks a year. This covers four weeks in the summer and a week's worth of provision in each of the Easter and Christmas holidays in 2021. Organisations will also be able to offer additional places to fee paying families.
18. Across Hampshire, there are currently 29,208 children who are potentially eligible to access holiday places on the HAF programme based on actual FSM eligibility numbers from school census information.
19. The desired outcomes of the programme are to encourage children and young people to:
 - a) To eat more healthily over the school holidays;
 - b) To be more active during the school holidays;

- c) To take part in engaging and enriching activities which support the development of resilience, character and wellbeing along with their wider education attainment;
- d) To be safe and not to be socially isolated;
- e) To have greater knowledge of health nutrition;
- f) To be more engaged with school and other local services.

20. The HAF programme also aims to ensure that the children and families who participate in the programme develop their understanding of nutrition and food budgeting as well as being effectively signposted towards other information and support for example health, employment and education.

21. The Council seeks to achieve these aims through the provision of holiday clubs and activities. Organisations will be grant funded to provide free of charge places at their schemes for eligible children and will be required to provide a healthy meal as part of their core delivery. They will provide a range of activities for the children and young people to engage with and participate in, with a focus on healthy eating and healthy lifestyles as a common theme. Organisations will also be expected to support the wider family and signpost to other key community resources as required.

Hampshire's Approach

22. The Holiday Activity and Food grant initiative will be delivered under the 'connect4communities' programme of work:
<https://www.hants.gov.uk/socialcareandhealth/childrenandfamilies/connectforcommunities>

23. The funding for the Christmas holidays will be allocated across two different grant streams:

- Grant Type A – For childcare places in existing schemes/clubs or new schemes/clubs being proposed in priority and rural areas;
- Grant Type B – For Christmas holiday events, short activities, innovative projects and initiatives targeting priority and rural areas, older children & young people (11–16 year olds), and families

24. Applications were invited against these two grant streams via the connect4communities website. Organisations were able to apply for one or more of the grants available depending on the type of activity they were seeking to deliver.

Finance

25. The Hampshire grant allocation from the DfE is £3,319,940. The table below reflects the actual and recommended spend to date, it includes the administration costs of managing the grant on behalf of the DfE and shows the balance remaining for Christmas. The administration costs include associated staff costs, marketing and supporting costs such as the £35,000 allocated for signposting grants, referred to in paragraph 4.
26. Given the total value of the grant, and the number of Hampshire FSM children of 29,208, the DfE HAF programme only provides £113.66 per FSM child in Hampshire. This is clearly not sufficient to provide access to HAF for every potentially eligible child and there is also no expectation that every single eligible child would access the programme.
27. The summer HAF programme saw between 31-36% of Hampshire FSM children attending HAF provision. Assuming similar levels of uptake over the Christmas holidays, the programme needs to provide for 9,054-10,515 FSM children.
28. The HAF Christmas programme is based on one week of delivery across four days and the minimum session each day is four hours (as per DfE requirements). The DfE has amended this requirement for Christmas to allow for some remote delivery for two of the four sessions. We have used one place at a session as the unit of calculation to indicate the number of children who can attend in any one day. This figure is then multiplied by the number of days (4). So, a target to reach 10 children would be $10 \times 4 \text{ days} = 40 \text{ places}$.
29. Through the grant awards recommended in this report, the Christmas Hampshire HAF Programme aims to secure 14,024 places which will provide in the order of 3,485– 6,962 (or 12- 33%) FSM children access to the scheme. DfE also allows councils to bid for an additional 15% if they can meet demand from FSM children. The Council has bid for this funding for the Christmas period, which equates to a potential extra £81,279, if awarded.
30. **Table 1: Actual and recommended spend to date, administration costs of, and balance remaining for Christmas:**

A Easter Grants Paid	B Summer Grants Awarded	C Christmas Grants Recommended	D Admin Forecast	E Total
£346,093	£2,135,747*	£541,860	£296,240	£3,319,940

*Please note that this figure differs from the summer Decision Report amount due to additional places being awarded by officer decisions made in consultation with the Executive Lead Member, as allowed for under the previous Decision Day report. The funding for the additional places came from the Easter and summer underspends held within the programme. A full list of all grants awarded is available on the connect4communities website at: [HAF grant recipients | Children and Families | Hampshire County Council \(hants.gov.uk\)](https://hants.gov.uk/haf-grant-recipients-children-and-families)

Performance

31. All funding granted to third party organisations (including schools, and early years providers) will be supported by a grant agreement setting out the conditions of the funding as well as reporting requirements.
32. Third party organisations will be required to report to the Council on how they have spent the funding provided, in line with the DfE grant criteria.
33. The Council has developed a monitoring approach which will embed and drive quality from the outset of the project. Monitoring is completed in three phases with the first being a self-assessment process mapping provider planning against HAF standards.
34. In phase two, Council officers will review, assess, and evidence the self-assessment, challenging providers where needed and highlighting and sharing exemplar practice. Phase two will include monitoring visits and cumulates in a HAF profile and score.
35. The final phase will pull together qualitative data in which Council officers will seek the views of children and participating families. In this phase Council officers will identify and highlight the most significant changes made to individuals, families and communities. This will form the basis for our own evaluation by the DfE.
36. In terms of Christmas provision, a range of proposals are being tested with key stakeholders such as families, schools and Family Support Service colleagues to ensure that any commissioned offer meets need.

Consultation and Equalities

37. These grants will have a positive impact on the following protected characteristics:
 - Age - children and young people and their families will benefit from these grants.
 - Disability – services provided will be inclusive.

38. The grants will also have a positive impact on rural and poverty considerations as provision will be targeted where there are currently gaps in rural areas and provision will be free of charge to benefits eligible free school meals children.

Other Key Issues

39. As part of the application process, organisations were asked to detail their Covid risk assessments. They were also asked to provide contingencies to their delivery plans should face to face sessions not be possible. Online activities and resources, and home food deliveries will enable organisations to mitigate against further restrictions, if necessary, whilst still offering a level of support to eligible children and their families.

Conclusions

40. It is recommended that the Executive Lead Member approves the award of HAF Christmas grants to the organisations identified in Appendix 1 to this report up to a total value of £541,860.05.
41. It is recommended that the Executive Lead Member delegates approval to the Director of Children's Services to approve the reallocation of any HAF remaining or underspent funds to organisations delivering services that meet the criteria of the grant set out in paragraph 19, in consultation with the Executive Lead Member; this may include new grants to partner organisations to supplement the HAF Christmas offer at schemes where gaps are identified at a local level.
42. It is recommended that the Executive Lead Member for Children's Services delegate approval to the Director of Children's Services to approve the allocation of HAF grant funds to partner organisations supporting the signposting HAF aim, up to a maximum of £35,000 to organisations delivering services that meet the criteria of the grant set out in paragraphs 19 and 20, in consultation with the Executive Lead Member. This may include new grants to partner organisations to supplement the HAF Summer offer where gaps are identified.

Climate Change

43. Hampshire County Council utilises two decision-making tools to assess the carbon emissions and resilience impacts of its projects and decisions. These tools provide a clear, robust, and transparent way of assessing how projects, policies and initiatives contribute towards the County Council's climate change

targets of being carbon neutral and resilient to the impacts of a 2°C temperature rise by 2050. This process ensures that climate change considerations are built into everything the Authority does.

44. The decision is essentially strategic/administrative in nature and does not have any climate change considerations.

Appendix 1 – Recommended HAF Grant Awards

Grant Type A – Places in existing or new clubs/schemes

Basingstoke

Organisation	Project Title	Age Range	Grant Recommendation	Number of places
1. Sports Xtra Basingstoke	Everest Community Academy	4-12	£5,150.00	140
2. Globe Fit	Westside Community Centre Paddock Road Basingstoke, Hants	5-12	£3,400.00	100
3. Active Me 360 CIC	Manor Field Junior School	5-12	£8,928.00	240
4. Magna Groups Enterprises Limited	Hatch Warren Infant School, Basingstoke	5-12	£6,520.00	200
5. Get Active Sports	Winklebury Infants and Junior School	5-16	£6,720.00	240
6. Isis Out of School Club	The Vyne Community School	5-12	£6,277.50	155
7. SCL Education Group	Old Basing Infant School	5-12	£1,440.00	48
Total			£38,435.50	1123

East Hants

Organisation	Project Title	Age Range	Grant Recommendation	Number of places
8. Active8 Minds	The Petersfield School	5-12	£3,000.00	80
9. KOOSA Kids Ltd	Liphook Junior School	5-13	£4,056.00	60
10. CM Sports UK Ltd	Liss Junior	5-12	£2,100.00	60

11. CM Sports UK Ltd	Wootey Junior	5-12	£4,200.00	120
12. CM Sports UK Ltd	Bordon Junior	5-12	£4,200.00	120
13. CM Sports UK Ltd	Horndean Technology College	5-12	£4,200.00	120
14. Sport4Kids Hampshire	Bordon & Whitehill - The Holme Primary School	5-13	£2,880.00	80
Total			£24,636	640

Eastleigh

Organisation	Project Title	Age Range	Grant Recommendation	Number of places
15. Personal Best Education	Barton Peveril College	5-12	£6,490.00	160
16. Globe Fit	Bursledon Village Hall, Long Ln, Bursledon, Southampton	5-12	£3,400.00	100
17. 4wards	St James' Primary School, West End	4-14	£2,100.00	75
18. Active Me 360 CIC	Nightingale Primary School	5-16	£8,928.00	240
19. JC Sports Development	Wellstead Primary School	4-14	£2,131.50	70
20. Premier Sports Bournemouth LLP	Shamblehurst Primary School	5-11	£7,080.00	240
Total			£30,129.50	885

Fareham

Organisation	Project Title	Age Range	Grant Recommendation	Number of places
21. YMCA Fairthorne Manor	YMCA Fairthorne Manor	5-16	£1,540.00	40
22. Globe Fit	Crofton Hammond Infant School, Mancroft Ave, Fareham	5-12	£2,550.00	75
23. Castle Early Birds	Castle Primary School	4-11	£2,800.00	80
24. CM Sports UK Ltd	Fareham College	5-12	£4,200.00	120
25. Growing Places	Growing Places @ Little Acorns	5-11	£763.75	25

26. Growing Places	Growing Places @ Oakmeadow	5-11	£763.75	25
Total			£12,617.50	365

Gosport

Organisation	Project Title	Age Range	Grant Recommendation	Number of places
27. Personal Best Education	Bridgemary School	5-12	£6,050.00	120
28. Globe Fit	Newtown Primary School, Queens Road, Gosport HAMPSHIRE	5-12	£4,250.00	125
29. CM Sports UK Ltd	St Vincent's College	5-12	£4,200.00	120
30. Premier Sports Bournemouth LLP	Gomer Junior School	5-11	£7,080.00	240
31. Premier Sports Bournemouth LLP	Rowner Junior School	5-11	£7,080.00	240
Total			£28,660.00	845

Hart

Organisation	Project Title	Age Range	Grant Recommendation	Number of places
32. KOOSA Kids Ltd	Court Moor School	5-13	£5,408.00	80
33. KOOSA Kids Ltd	Hook Infant School	5-13	£4,056.00	60
34. SCL Education Group	Mayhill Junior School	5-12	£1,440.00	48
35. SCL Education Group	Westfields Infant School	5-12	£1,440.00	48
Total			£12,344.00	236

Havant

Organisation	Project Title	Age Range	Grant Recommendation	Number of places
36. Active8 Minds	Havant Academy	5-12	£4,300.00	120
37. Oaklands catholic School	Oaklands Catholic School	8-11	£4,560.00	120
38. Freedom School Holidays	Purbrook Junior School	5-12	£21,400.00	575
39. CM Sports UK Ltd	Riders Junior	5-12	£4,200.00	120
40. CM Sports UK Ltd	Bidbury Infant	5-12	£4,200.00	120
41. OSCA Childcare Limited	Mengham Infant School	4-11	£1,080.00	24
42. Growing Places	Growing Places @ Mill Hill	5-11	£2,291.25	75
43. Globe Fit	Bedhampton Community Centre	5 - 12	£3,400.00	20
Total			£45,431.25	1174

New Forest

Organisation	Project Title	Age Range	Grant Recommendation	Number of places
44. Globe Fit	Calmore Community Centre, Calmore Drive, Calmore	5-12	£3,400.00	100
45. JC Sports Development	Highcliffe School	4-14	£2,131.50	70
46. JC Sports Development	Testwood School	4-14	£2,131.50	70
47. JC Sports Development	Breamore Primary School	4-14	£2,131.50	70
48. New Forest Child Care CIC	NFCC Abbotswood Junior School	5-11	£3,845.00	100
49. Premier Sports Bournemouth LLP	Ashley Infants	5-11	£7,080.00	240
50. Premier Sports	Milford On Sea Primary School	5-11	£5,900.00	200

Bournemouth LLP				
51. Planet Education	Wildground School	5-11	£2,900.00	100
51. DFJ Multisports	New Milton Scout HQ	5-12	£4,620.00	120
52. Milford Pre-School Plus Ltd	Milford On Sea, Lymington	5-11	£1,260.00	40
Total			£35,399.50	1110

Rushmoor

Organisation	Project Title	Age Range	Grant Recommendation	Number of places
53. Casa Clubs Limited	The Cambridge School, Aldershot	5-12	£8,750.00	250
54. KOOSA Kids Ltd	Alderwood Infant School	5-13	£4,732.00	70
55. CM Sports UK Ltd	Wavell School	5-12	£4,200.00	120
56. CM Sports UK Ltd	Guillemont Junior School (tbc)	5-12	£4,200.00	120
57. Premier Education	Samuel Cody Specialist Sports College	5-11	£8,832.00	256
58. SCL Education Group	Parsonage Farm Nursery & Infant School	4-12	£1,440.00	48
Total			£32,154.00	864

Test Valley

Organisation	Project Title	Age Range	Grant Recommendation	Number of places
59. Personal Best Education	The Mountbatten School	5-12	£5,720.00	160
60. Globe Fit	Augusta Park Community Centre, East Anton Farm Rd, Andover	5-12	£3,400.00	100
61. 360 Degree Sports Coaching	The Romsey School	5-14	£3,250.00	120
62. Planet Education	Andover Leisure Centre	5-14	£4,140.00	120
63. Your Sports Education	Romsey Primary School	5-12	£1,740.00	60
Total			£18,250.00	560

Winchester

Organisation	Project Title	Age Range	Grant Recommendation	Number of places
64. Denmead Holiday Club	Denmead Infant School	4-11	£1,980.00	60
65. SportSkool Ltd	John Keble School	5-13	£3,160.00	80
66. Active Me 360 CIC	Swanmore College	4-16	£8,928.00	240
67. Integr8 Dance	Unit 12 Primary	5-11	£6,500.00	200
68. Alresford Youth Association	Sun Hill Junior School	5-11	£2,600.00	80
69. 360 Degree Sports Coaching	Weeke Primary School	5-14	£3,250.00	120
Total			£26,418.00	780

Grant Type B – Family/Community/Youth Events/Activities

Basingstoke

Organisation	Project Title	Age Range	Grant Recommendation	Number of places
70. Personal Best Education	Basingstoke College of Technology, Basingstoke	11-15	£6,600.00	120
71. Cook Stars* Thatcham to Hook	Diamond scout centre, Southdown road, Tadley	5-10	£400.00	10
72. Cook Stars* Thatcham to Hook	Diamond scout centre, Southdown road, Tadley	11-16	£450.00	10
73. Whitchurch Conservation Group	Gill Nethercott Centre	5-11	£4,608.00	48
Total			£12,058.00	188

*This project will support the HAF nutritional education requirement across a number of schemes.

East Hants

Organisation	Project Title	Age Range	Grant Recommendation	Number of places
74. Personal Best Education	Alton Football Club, Alton	11-15	£6,600.00	120

75. CM Sports	Bordon	11-16	£6,326.00	120
Total			£12,926.00	240

Eastleigh

Organisation	Project Title	Age Range	Grant Recommendation	Number of places
76. Personal Best Education	2000 Centre, Hedge End	11-15	£6,600.00	120
77. Personal Best Education	Energy Youth Centre, Eastleigh	11-15	£6,600.00	120
78. Provider to be confirmed*	tbc	5-11	Up to £22,739.40	560
Total			£35,939.40	800

*Subject to discussion with the provider – scale may be altered

Fareham

Organisation	Project Title	Age Range	Grant Recommendation	Number of places
79. Y Services for Young People	Titchfield	10-16	£2,061.50	80
Total			£2,061.50	80

Gosport

Organisation	Project Title	Age Range	Grant Recommendation	Number of places
80. Planet Education	Gosport Leisure Centre	5-14	£4,140.00	120
81. Y Services for Young People	Elson	10-16	£2,061.50	80
82. Motiv8 South Ltd - Gosport and Fareham Team	Bay House School and Rowner Junior School	7-16	£9,600.00	240
83. Motiv8 South Ltd - Gosport and Fareham Team	Fort Brockhurst, Gosport	5-16	£8,000.00	200
84. Motiv8 South Ltd - Gosport and Fareham Team	Rowner Community Trust	5-16	£800.00	20
85. Motiv8 South Ltd - Gosport	Discovery Centre and Bridgemary Library	5-11	£800.00	20

and Fareham Team				
Total			£25,401.50	680

Hart

Organisation	Project Title	Age Range	Grant Recommendation	Number of places
86. Personal Best Education	Fleet	11-15	£6,600.00	120
87. Cook Stars Thatcham to Hook	Elizabeth Hall, Raven road	5-10	£400.00	10
88. Cook Stars Thatcham to Hook	Elizabeth Hall, Raven road, Hook	11-16	£450.00	10
Total			£7,450.00	140

Havant

Organisation	Project Title	Age Range	Grant Recommendation	Number of places
89. Hayling Island Community Centre Association CIO	Hayling Island Community Centre	5-18	£11,400.00	300
90. Park & Romsey Community School*	Family Day	5-11	Up to £22,739.40	560
91. Park & Romsey Community School*	Teen	11-16	£7,980.00	128
92. Motiv8 Havant	Motiv8, The Hub Leigh Park	10-16	£1,108.80	28
Total			£43,228.20	1016

*Subject to discussion with the provider – scale may be altered

New Forest

Organisation	Project Title	Age Range	Grant Recommendation	Number of places
93. St Barbe Museum and Art Gallery	Lymington Community Association	5-16	£3,762.00	90
94. Provider to be confirmed*	tbc	5-11	Up to £22,739.40	560
Total			£26,501.40	650

*Subject to discussion with the provider – scale may be altered

Test Valley

Organisation	Project Title	Age Range	Grant Recommendation	Number of places
95. Personal Best Education	The Mountbatten School, Romsey	11-15	£6,600.00	120
96. Park & Romsey Community School*	Family Days at Romsey	5-11	Up to £22,739.40	560
97. Provider to be confirmed*	tbc	5-11	Up to £22,739.40	560
98. Park & Romsey Community School*	Teen scheme	11-16	£7,980.00	128
Total			£60,058.80	1368

*Subject to discussion with the provider – scale may be altered

Winchester

Organisation	Project Title	Age Range	Grant Recommendation	Number of places
99. Personal Best Education	King's School, Winchester	11-15	£6,600.00	120
100. The Carroll Centre	The Carroll Centre, Stanmore	5-11	£2,560.00	80
101. Integr8 Dance	Unit 12 Teen	11-16	£2,600.00	80
Total			£11,760.00	280

REQUIRED CORPORATE AND LEGAL INFORMATION:

Links to the Strategic Plan

Hampshire maintains strong and sustainable economic growth and prosperity:	Yes
People in Hampshire live safe, healthy and independent lives:	Yes
People in Hampshire enjoy a rich and diverse environment:	Yes
People in Hampshire enjoy being part of strong, inclusive communities:	Yes

Other Significant Links

Links to previous Member decisions:	
<u>Title</u> COVID Winter Grants COVID Winter Grants – Holiday Activities and Community Grants HAF Grant Recommendations HAF Grant Recommendations	<u>Date</u> 9 December 2020 2 February 2021 22 February 2021 8 June 2021
Direct links to specific legislation or Government Directives	
<u>Title</u> Department for Education: Grants to fund local coordination of free holiday activities and healthy food for disadvantaged children during 2021.	<u>Date</u> February 2021

Section 100 D - Local Government Act 1972 - background documents

The following documents discuss facts or matters on which this report, or an important part of it, is based and have been relied upon to a material extent in the preparation of this report. (NB: the list excludes published works and any documents which disclose exempt or confidential information as defined in the Act.)

Document

Location

None

EQUALITIES IMPACT ASSESSMENT:

0. Equality Duty

The County Council has a duty under Section 149 of the Equality Act 2010 ('the Act') to have due regard in the exercise of its functions to the need to:

- Eliminate discrimination, harassment and victimisation and any other conduct prohibited by or under the Act with regard to the protected characteristics as set out in section 4 of the Act (age, disability, gender reassignment, marriage and civil partnership, pregnancy and maternity, race, religion or belief, sex and sexual orientation);
- Advance equality of opportunity between persons who share a relevant protected characteristic within section 149(7) of the Act (age, disability, gender reassignment, pregnancy and maternity, race, religion or belief, sex and sexual orientation) and those who do not share it;
- Foster good relations between persons who share a relevant protected characteristic within section 149(7) of the Act (see above) and persons who do not share it.

Due regard in this context involves having due regard in particular to:

- The need to remove or minimise disadvantages suffered by persons sharing a relevant protected characteristic that are connected to that characteristic;
- Take steps to meet the needs of persons sharing a relevant protected characteristic that are different from the needs of persons who do not share it;
- Encourage persons sharing a relevant protected characteristic to participate in public life or in any other activity in which participation by such persons is disproportionately low.

1. Equalities Impact Assessment:

Equalities Impact Assessment:

Name of project or proposal (required): Holiday Activity and Food (HAF) Grant Programme

Is this project a Transformation project? (required): Neither

Name of accountable officer (required): Suzanne Smith

Email (required): suzanne.smith2@hants.gov.uk

Department (required): Children's Services

Date of assessment (required): 05/10/2021

Is this a detailed or overview EIA? (required): Overview

Describe the current service or policy. This question has a limit of 700 characters; approximately 100 words (required):

The Department for Education (DfE) has provided every local authority in England funding to coordinate free holiday provision, including healthy food and enriching activities, for children eligible for benefits related free school meals. The programme covers the Easter, summer and Christmas holidays in 2021. Hampshire County Council have been awarded a total of £3,319,940. This EIA covers Christmas 2021 provision.

Geographical impact (required): All Hampshire

Describe the proposed change. This question has a limit of 700 characters; approximately 100 words (required):

Hampshire County Council is distributing its DfE allocation via two grant streams for Christmas provision;

Grant Type A – For childcare places in existing schemes/clubs or new schemes/clubs being proposed in priority and rural areas;

Grant Type B – For Christmas holiday events, short activities, innovative projects and initiatives targeting priority and rural areas, older children & young people (11–16 year olds), and families.

Who does this impact assessment cover? (required): Service users

Has engagement or consultation been carried out? (required): Yes

Describe the consultation or engagement you have performed or are intending to perform. This question has a limit of 700 characters; approximately 100 words (required):

Market engagement was undertaken with a range of providers and with schools to ensure that they were aware of the opportunity for funding, HAF in general and could apply for a grant, if interested. Particular focus was given to areas with known gaps in provision such as rural areas.

Successful applicants will receive a briefing on the HAF principles and other key topics such as safeguarding.

Age (required): Positive

Impact (required): Children and young people (and their families) will benefit from the HAF grant programme as the funding is directed at school age children and young people.

Disability (required): Positive

Impact (required): Organisations funded by HAF are expected to offer inclusive provision so that children and young people with additional needs can attend.

Sexual orientation (required): Neutral

Race (required): Neutral

Religion or belief (required): Neutral

Gender reassignment (required): Neutral

Gender (required): Neutral

Marriage or civil partnership (required): Neutral

Pregnancy and maternity (required): Neutral

Poverty (required): Positive

Impact (required): The HAF funding is directed at children who are benefits eligible for Free School Meals. The funding will mean that they will be able to access free holiday activities and food during Christmas 2021.

Rurality (required): Positive

Impact (required): The HAF funding is to support holiday activities throughout the county. This includes rural areas where activity schemes may not have traditionally operated. Funding will be used to prioritise these areas to encourage organisations to deliver in pockets of the county where there is a lack of existing provision.

Any other brief information which you feel is pertinent to this assessment (optional): N/A

Please confirm that the accountable officer has agreed the contents of this form (required): Yes

HAMPSHIRE COUNTY COUNCIL

Decision Report

Decision Maker:	Executive Lead Member for Children's Services
Date:	10 November 2021
Title:	Expansion of Mark Way School, Andover
Report From:	Director of Children's Services

Contact name: Bernadette Dawes, Inclusion Commissioning Manager

Tel: 0370 7790226

Email: Bernadette.Dawes@hants.gov.uk

Purpose of this Report

1. The purpose of this report is to provide feedback on the public consultation and seek approval to publish a statutory public notice in relation to the proposed expansion of Mark Way School, Andover.

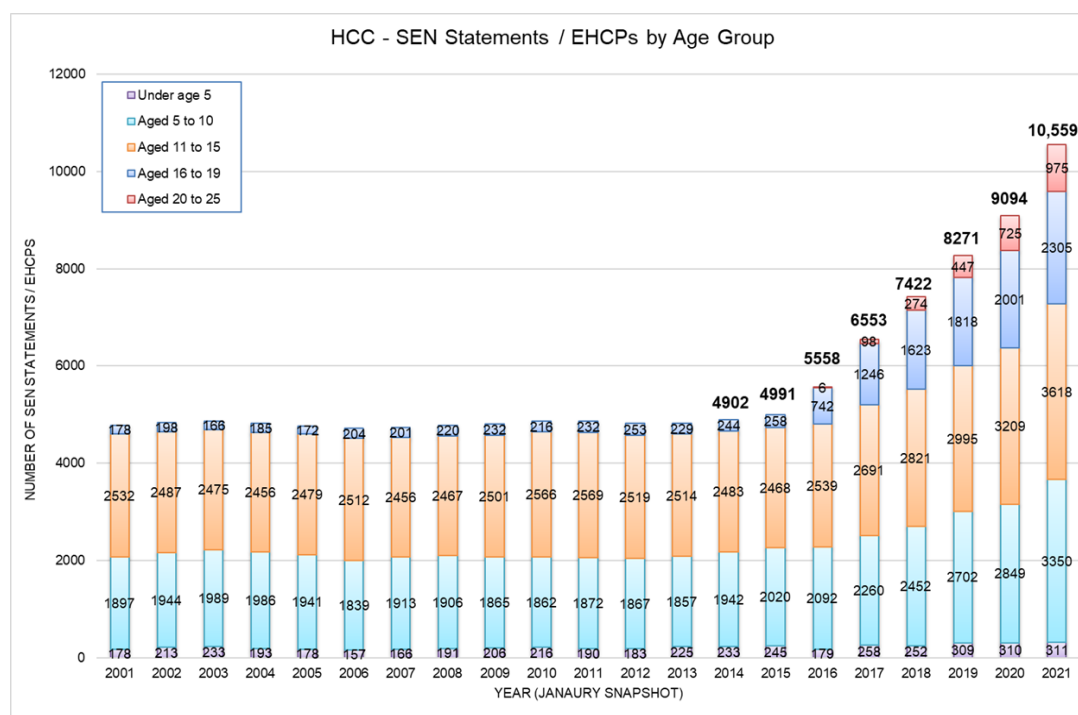
Recommendations

2. To approve the publication of a statutory Public Notice under Section 19 (1) of the Education and Inspections Act 2006:
 - **To expand Mark Way School, Andover with effect from 1 September 2023**

Executive Summary

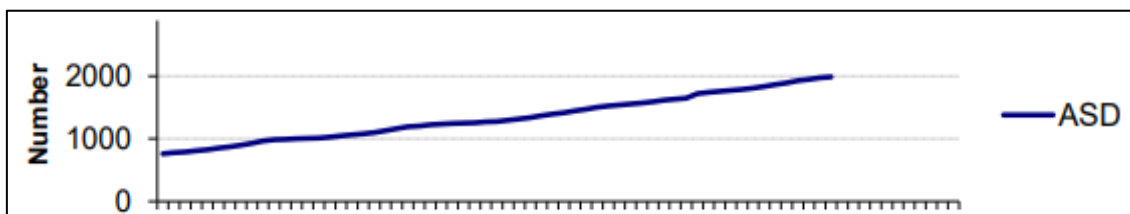
3. Hampshire County Council has a statutory duty to provide school places for all children including those who have special educational needs and/or a disability. The County Council is committed to further developing successful provision to meet this demand within the Special Education Needs and Disability (SEND) sector.
4. The proposed additional SEND provision outlined within this report will help manage some of the school place pressures generated by the increase in the number of Education, Health and Care Plans (EHCPs) maintained by the Local Authority.

5. The table below shows that there has also been a rise in the number of plans being maintained. As of 31 August 2021, there were 11,744 EHC Plans being maintained, a 19.7% increase on the same time last year. The growth in EHC Plans across the age ranges is varied, with all age ranges seeing a significant rise in numbers and particular growth for the post 16 age ranges. Overall, since the reforms took effect in 2015 there has been a 135% increase in the number of EHC Plans being maintained.



6. The County Council is committed to further developing successful provision or creating new provision where possible to meet demand for places. Currently, there is a need to provide support for pupils across most areas of SEND but particularly for pupils with Autistic Spectrum Conditions (ASC) as there has been a 161% increase from September 2016 to September 2021.
7. The number of pupils with a primary need of ASC is increasing, and in 4 of the last 5 years the ASC growth rate has exceeded the EHCP growth rate.
8. The table and graph below show that in September 2016 ASC was the primary need of 12.3% of maintained EHCPs. In September 2021, ASC is the primary need of 16.7% of maintained EHCP's:

Month-Year	Total EHCPs	EHCP % Increase	Primary need of ASC	ASC % increase
Sep 2016	6,199	-	761	-
Sep 2017	7,292	17.6%	1,003	31.8%
Sep 2018	8,121	11.4%	1,225	22.1%
Sep 2019	8,784	8.2%	1,416	15.6%
Sep 2020	10,186	16.0%	1,720	21.5%
Sep 2021	11,907	16.9%	1,989	15.6%



Numbers of current statements/EHC plans being maintained at the end of each month, with a primary need of ASD, over 5 years September 2016 to September 2021

9. The lack of sufficient provision within Hampshire Schools has resulted in increased placements within the independent and non-maintained sector (INMSS). The proposals contained within this report aim to build on the good quality Hampshire school provision and meet the needs of children and young people within their settings. This will reduce the Local Authority's dependence upon independent and non-maintained provision (INMSS) and will aim to keep pupils as close to their home community as possible.

Finance

10. A scheme is being developed that provides an additional 20 places through the provision of two new classrooms and two new group rooms along with extensive internal refurbishment. The estimated cost of the new accommodation is £1.604m (including fees).
11. Therefore, it is recommended that resources of £1.604m (including fees) are allocated from the 2021/22 capital programme. A detailed project appraisal will be brought to a future decision day.

Climate Change Impact Assessment

12. Hampshire County Council utilises two decision-making tools to assess the carbon emissions and resilience impacts of its projects and decisions. These tools provide a clear, robust, and transparent way of assessing how projects, policies and initiatives contribute towards the County Council's climate change targets of being carbon neutral and resilient to the impacts of a 2°C temperature rise by 2050. This process ensures that climate change considerations are built into everything the Authority does.
13. The carbon mitigation tool and the climate change adaption tool were not applicable because this is a strategic capital programme report. The Climate Change Impact Assessment will be undertaken in conjunction with colleagues in Culture, Community and Business Services as individual projects are developed and brought to future Decision Days.

Mark Way School, Andover

14. Mark Way School is an 82-place special school catering for 11–16-year-old pupils with ASC and moderate learning difficulties. The school is successfully meeting the needs of children with a range of difficulties in a safe and secure environment.

15. Hampshire County Council is proposing to undertake internal works which will allow the school to increase the capacity by up to 20 additional places from September 2023.
16. The works will provide additional internal teaching accommodation to enable more children to attend the school and improve the overall learning environment for all pupils.
17. This will give a final overall capacity of 102 places at Mark Way School.

Consultation

18. Formal consultations took place between 10 September and 8 October 2021.

A letter (Appendix 1) with details of the proposal was sent to the following stakeholders and feedback was invited by email and letter and meetings with officers offered if requested:

- Parents of children attending the schools
- Headteachers, school staff and Governing Body of the schools
- Headteachers and Chairs of Governors of neighbouring schools
- Borough, district, and parish Councils – Local Councillors
- Trade union representatives
- Local Dioceses
- Local MPs
- HCC Elected Members
- Residents of the immediate areas
- Other relevant community stakeholders

Copies of the consultation letters are attached under appendix 1.

19. The proposals were also included on the Hampshire County Council's consultation website:

<https://www.hants.gov.uk/aboutthecouncil/haveyoursay/consultations>

Consultation Responses Received – Mark Way School, Andover

20. One positive comment has been received about the proposed expansion of Mark Way School. This was from Cllr. Kirsty North, a County Councillor who wrote in support of the proposed provision.

21. Conclusions

22. In considering all the response received, the County Council believes that the enlargement of Mark Way School, as detailed above, is necessary to meet the County Council's statutory duty for children with SEND, and that

the comments received did not represent sufficient concern to prevent proceeding to the publication of statutory public notices.

23. Approval is sought to publish a statutory public notice on the proposal and enter a formal consultation period of 4 weeks from November 19, 2021. These notices will be displayed at the school, circulated to relevant stakeholders, and published on the Council's Public Notice Portal. A further report following the closure of the consultation periods will be brought to a future Decision Day.

REQUIRED CORPORATE AND LEGAL INFORMATION:

Links to the Strategic Plan

Hampshire maintains strong and sustainable economic growth and prosperity:	Yes
People in Hampshire live safe, healthy, and independent lives:	Yes
People in Hampshire enjoy a rich and diverse environment:	Yes
People in Hampshire enjoy being part of strong, inclusive communities:	Yes

Other Significant Links

Links to previous Member decisions:		
<u>Title</u>	<u>Reference</u>	<u>Date</u>
Children's Services Capital Programme update		
Direct links to specific legislation or Government Directives		
<u>Title</u>	<u>Date</u>	

Section 100 D - Local Government Act 1972 - background documents

The following documents discuss facts or matters on which this report, or an important part of it, is based and have been relied upon to a material extent in the preparation of this report. (NB: the list excludes published works and any documents which disclose exempt or confidential information as defined in the Act.)

<u>Document</u>	<u>Location</u>
None	

EQUALITIES IMPACT ASSESSMENT:

Equality Duty

The County Council has a duty under Section 149 of the Equality Act 2010 ('the Act') to have due regard in the exercise of its functions to the need to:

- Eliminate discrimination, harassment and victimisation and any other conduct prohibited by or under the Act with regard to the protected characteristics as set out in section 4 of the Act (age, disability, gender reassignment, marriage and civil partnership, pregnancy and maternity, race, religion or belief, sex, and sexual orientation).
- Advance equality of opportunity between persons who share a relevant protected characteristic within section 149(7) of the Act (age, disability, gender reassignment, pregnancy and maternity, race, religion or belief, sex, and sexual orientation) and those who do not share it.
- Foster good relations between persons who share a relevant protected characteristic within section 149(7) of the Act (see above) and persons who do not share it.

Due regard in this context involves having due regard in particular to:

- The need to remove or minimise disadvantages suffered by persons sharing a relevant protected characteristic that are connected to that characteristic.
- Take steps to meet the needs of persons sharing a relevant protected characteristic that are different from the needs of persons who do not share it.
- Encourage persons sharing a relevant protected characteristic to participate in public life or in any other activity in which participation by such persons is disproportionately low.

Equalities Impact Assessment:

Equality and diversity objectives will be considered on an individual project basis by conducting Equality Impact Assessments and are not considered at this stage or within this report.

Climate Change Impact Assessment

Hampshire County Council utilises two decision-making tools to assess the carbon emissions and resilience impacts of its projects and decisions. These tools provide a clear, robust, and transparent way of assessing how projects, policies and initiatives contribute towards the County Council's climate change targets of being carbon neutral and resilient to the impacts of a 2°C temperature rise by 2050. This process ensures that climate change considerations are built into everything the Authority does.

The carbon mitigation tool and the climate change adaption tool were not applicable because this is a strategic capital programme report. The Climate Change Impact Assessment will be undertaken in conjunction with colleagues in Culture, Community and Business Services as individual projects are developed and brought to future Decision Days.

Appendix 1

Claire Campling

03707 795 312

10 September 2021

strategicplanningunit@hants.gov.uk

Dear Consultee,

Proposal to increase the capacity of Mark Way School, Andover – Consultation

I am writing to invite your views in respect of Hampshire County Council's proposal to increase the capacity of Mark Way School, Andover.

Mark Way School is an 82-place special school catering for 11–16-year-old pupils with ASC and moderate learning difficulties. The school is successfully meeting the needs of children with a range of difficulties in a safe and secure environment.

The County Council is proposing to undertake internal works which will allow the school to increase the capacity by up to 20 additional places from September 2023. The works will provide additional internal teaching accommodation to enable more children to attend the school and improve the overall learning environment for all pupils. This will give a final overall capacity of 102 places at Mark Way School.

Reason for proposal

Hampshire County Council is committed to expanding successful provision where possible to meet demand. Currently there is an increased need to provide support for pupils with complex learning needs in this area of the county. This proposal will provide much needed specialist educational capacity to meet this increased demand.

The information in this letter and some Frequently Asked Questions are available on the following website: <http://consultations.hants.gov.uk/active.aspx>

The Consultation

The purpose of this consultation is to seek the view of all stakeholders on the principle of increasing the school capacity to meet the demand for additional special school places in the Andover area.

The consultation and decision-making process is outlined below:

- This initial consultation will run from the 10 September to 8 October 2021. A report outlining the consultation responses received will then be taken to the Executive Lead Member for Children's Services November 2021 to decide if the proposal should continue to the formal statutory consultation stage.
- If approved, a statutory Public Notice would be published in November/December 2021 setting out Hampshire County Council's intent to increase the capacity of the school and to add to its designation. This is a four-week period in which any representations can be made to the local authority.
- A final report would then be taken to Executive Lead Member for Children's Services Decision Day in November 2022 who will decide whether to proceed with the proposal.

Further Information

Due to Covid-19 restrictions and ensuring public safety, unfortunately we are unable to hold a public drop-in event at the school. However please send in your views and queries by email to strategicplanningunit@hants.gov.uk.

If you would like to speak to an Officer then please make that request by email, briefly outlining your query so we can arrange a mutually convenient time for you to speak to an appropriate officer, either via conference call or telephone.

A website has also been set up with the details of the consultation which includes some 'Frequently Asked Questions' that may address any queries you have. To access this website please go to the online address below:

<http://consultations.hants.gov.uk/active.aspx>

If you are unable to email or visit the above website and wish to make a comment then please write to Claire Campling, Assistant SEN Service Manager, Children's Services Department, Ell Court North, Winchester, Hampshire SO23 8UG by 8 October 2021.

Yours sincerely,
Claire Campling

Assistant SEN Service Manager

Children's Services Department

This page is intentionally left blank

HAMPSHIRE COUNTY COUNCIL

Decision Report

Decision Maker:	Executive Lead Member for Children's Services
Date:	10 November 2021
Title:	The Future of Hatherden Church of England Primary School
Report From:	Director of Children's Services

Contact name: Brian Pope

Tel: 023 9244 1471

Email: brian.pope@hants.gov.uk

Purpose of this Report

1. The purpose of this report is to outline the position regarding Hatherden Church of England Primary School.
2. In conclusion the improved standards at Hatherden Church of England Primary School are not able to be maintained without significant and continuing input from HIAS and the Diocese. The failure of the DfE and RSC to secure a sponsor to take the school on, when coupled with falling pupil numbers and an increasing financial deficit means closure of the school should be considered.

Recommendation(s)

3. It is recommended that the Executive Lead Member for Childrens Services approve the commencement of a consultation to consider the closure of the school with effect from 31 August 2022.

Executive Summary

4. This report seeks approval to begin the process of undertaking a consultation process around the potential closure of Hatherden Church of England Primary School with effect from 31 August 2022.

Summary

5. Hatherden Church of England Primary School is a small rural Church of England (Aided) school. It's performance, as rated by Ofsted, has been inconsistent. Over the past seven years it has been judged to be failing in two Ofsted judgements, the most recent in July 2019.
6. The school has received further monitoring visits in February 2020, November 2020, January 2021 and May 2021. Following these Section 8 inspections the school remains in a category of concern, despite improvements that have been noted. These improvements rely heavily upon external support.
7. As the school is currently judged as Inadequate, the Department for Education (DfE) has served an academy order on the school. The DfE has been trying to secure an academy sponsor but have been unsuccessful owing to the low number of pupils and the consequent long term financial and educational sustainability of the school. A letter is attached from the Regional Schools Commissioner setting out their position.
8. Discussions have been held with the Diocese about the future of the school and the general consensus of opinion is that a consultation process should commence around the closure of the school. A letter is attached outlining the diocese position regarding the school.
9. The school had 47 pupils on roll in the October 2020 census, but this has reduced over the last year to 34 pupils as parents continue to choose other schools. Four pupils have joined in the Early Years reception age range this year so far against a PAN of 16, (9 September 2021).
10. Budget reductions, driven by smaller pupil numbers, have led to restructuring of staff and a consequential widening of responsibilities that continues to reduce management capacity.

School Performance and support from the Local Authority

11. In October 2014 Hatherden Church of England Primary School was categorised "Inadequate" by Ofsted. Although a subsequent inspection in September 2015 rated the school as "Good", following a period of Local Authority (LA) support, it has been unable to sustain this rating. It was last inspected in July 2019, when inspectors judged the school to have serious weaknesses (Inadequate). The inspectors noted that safeguarding arrangements required urgent review and sharpening. In addition, inspectors noted that leaders needed to improve the leadership and management of the school, including governance, the quality of teaching and learning, and the progress made by pupils in writing and mathematics.

12. The school has benefitted from intensive, and largely funded, support from HIAS in order to improve the educational experiences and safeguarding of children in the school. Further support has also been provided through the Diocese and DfE funded school to school support through a Teaching School.
13. Since the inspection in 2019, Ofsted have monitored the school three times. At each of the monitoring visits where Ofsted made a judgement, inspectors noted that leaders, and those responsible for governance were taking effective action. Despite this, inspectors also noted that the impact of the extensive external support provided to the school, by the LA and the local teaching school, has been impeded by ongoing changes in the school's structure and leadership related to the fall in pupil numbers, as well as the challenges of the pandemic. It is likely that, following the pattern seen before, when the LA reduces its support, the school will be unable to maintain the progress it has made to date.
14. In the January 2021 inspection it was acknowledged that leaders and those responsible for governance are taking effective action to provide education in the current circumstances. It was also noted that a number of pupils had left the school and the school was now running two classes for the number of pupils on roll.
15. The Section 8 inspection in May 2021 concluded that leaders and managers are taking effective action towards the removal of the serious weaknesses designation. However, it also explained that "leaders' work to improve the curriculum remains ongoing. A number of factors have impeded the pace of this urgently needed work. Managing changes to the school's structure and leadership led to some initial momentum being lost." It further comments, "The local authority and diocese continue to invest heavily in supporting the school. By coordinating their work, this is enabling leaders to concentrate on a streamlined set of school-improvement priorities. Currently, local authority and diocesan support are focused on curriculum planning. This work is freeing up school leaders' capacity to focus on other priorities and the day-to-day running of the school."
16. It is also the view of the Local Authority School Improvement Team that the changes in staffing related to falling numbers, and associated budget pressures, has an adverse effect on leaders and teachers' collective capacity to improve the school at a sufficient pace, despite the considerable external support they receive. In addition, when the school is once again good, and no-longer receives additional support, it will be challenging for a school of this size, with the related reduced leadership and teaching capacity, to respond to the common place challenges faced by schools on a regular basis, such as the recent review of the primary curriculum. Similarly, the many and various leadership and management roles that are typically shared out amongst a range of school staff will, in this school, sit with only the headteacher and one teacher.

17. This presents leaders and governors with challenges around the effectiveness of leadership and management in addition to the workload and wellbeing of individual staff. There are also implications for children of attending a school of this size, not least the social and emotional effects of a reduced peer group or indeed of being the only child in the school in a year group. The school has already lost pupils because parents want them to attend a school with children their own age and this leaves those pupils who remain at Hatherden increasingly isolated from their peers.

Finance

18. Set out in the table below is the budgetary position for the school for the next few years.

<i>Financial year</i>	<i>In Year +surplus / -deficit £</i>	<i>Cumulative position £</i>
<i>Balance from 2020/21</i>		<i>+88,222</i>
<i>2021/22</i>	<i>+31,306</i>	<i>+119,528</i>
<i>2022/23</i>	<i>-43,006</i>	<i>+76,523</i>
<i>2023/24</i>	<i>-32,387</i>	<i>+44,136</i>

19. The in-year surplus for 2021/22 is because the school received funding for 47 pupils as per the October census and the school has run three classes with the Headteacher teaching for part of the time.
20. The in-year deficit for 2022/23 assumes the school will be funded for 29 pupils (although this could be 31 depending on recruitment into YR) and will run two classes.
21. For the 2023/24 financial year there is an assumption that the school will be funded for 30 pupils and continue to run two classes.

Numbers on roll

22. As set out above there are now 34 pupils on roll at the school. Only 5 of these children currently live within the catchment area of Hatherden. There are 26 primary age pupils living in Hatherden so many parents are already choosing a school, other than Hatherden, for their children (mostly other small rural schools with a church connection). The forecast for the school shows a continued drop in pupil numbers (this assumes that parents will continue to choose other schools for their children during the academic year).
23. It has always been the case that for the school to be full it has needed to attract out of catchment pupils. For the 2019/20 academic year the school

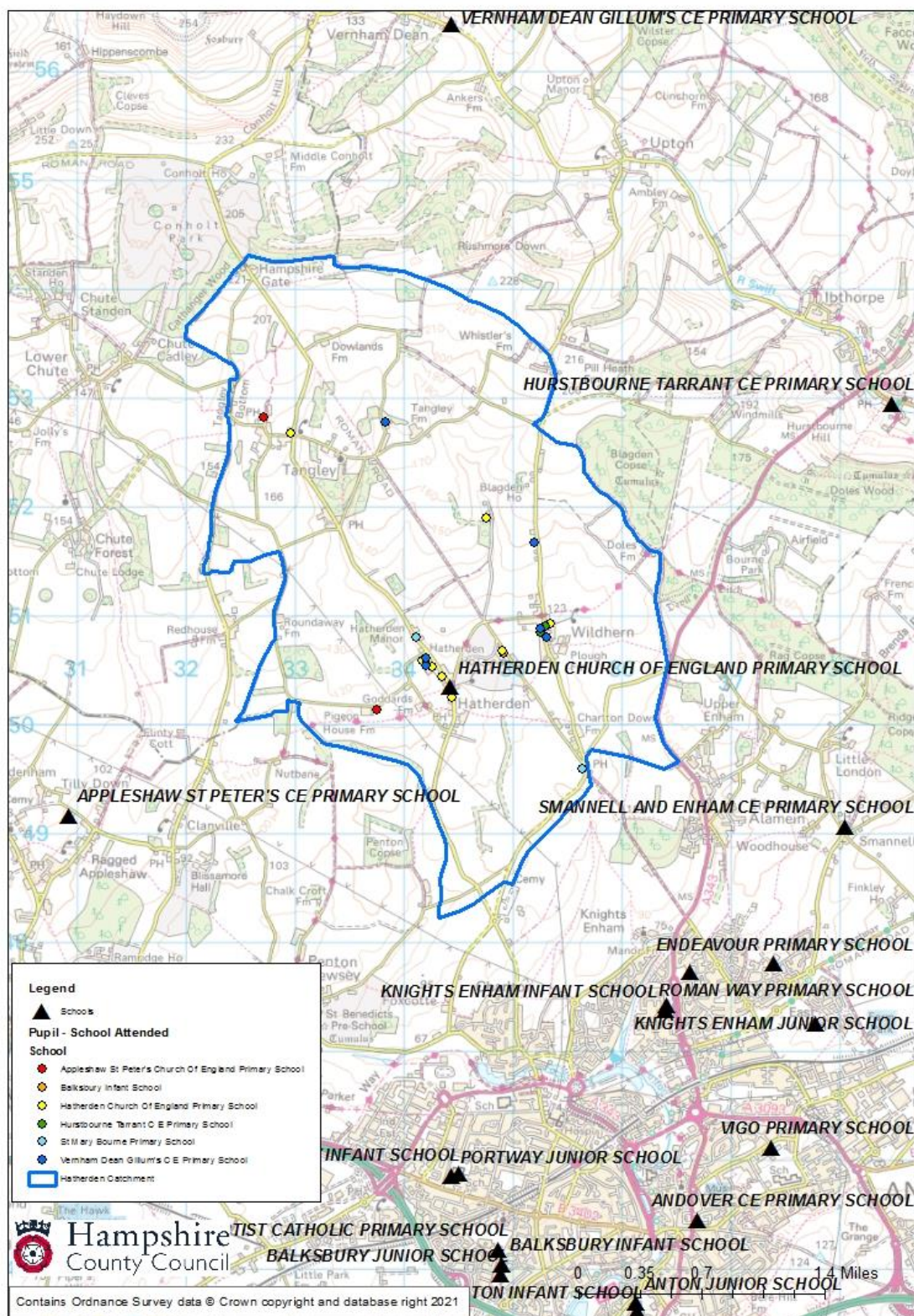
had 15 pupils join in YR. By the time this cohort had moved into Y1, for the following academic year, this number had dropped to 10. This trend is being seen in some other year groups within the school but not such a high level. Although current Y5 and Y6 is stable, all other year groups, with the exception of current Y1 where there is under-capacity in schools in the whole area, have declined from 2020/21 to 2021/22 school years.

24. The table below shows how the numbers in each year group has changed since the census day in October 2020 and 9 September 2021.

	October 2020	9 September 2021
YR	8	4
Y1	10	12
Y2	8	4
Y3	5	2
Y4	3	4
Y5	5	3
Y6	8	5
Total	47	34

Home to School Travel

25. Should Hatherden Church of England Primary School close there will be a Home to School Transport burden. The current forecasts of children living in nearby school catchment areas are such that Appleshaw St Peter's Primary School is best placed to become the catchment school for this area if Hatherden were to close. Primary phase home to school transport costs in the local area are currently ~ £1340 per pupil per annum. There are approximately 35 primary age pupils resident in the Hatherden Church of England Primary School catchment area although not all are known to attend a Hampshire County Council maintained school. This provides a maximum forecast estimate for the additional transport budget burden of £47,000 per annum. Considering the number of children from Hatherden's catchment area attending only Hampshire County Council maintained schools leads to a lower additional estimated burden of £28,000 per annum.
26. On the next page is a map of the area showing the position of each of the neighbouring primary phase schools.



Closure of the School

27. There is a presumption against the closure of a rural school but that does not mean that a rural school will never close although it does mean that the LA has to consider a number of issues before commencing a consultation to close the school. As an aided school one of the areas that needs to be considered is the availability of places at other schools in the area with church connections. For Hatherden there are other primary schools in the area with church connections as set out above, i.e. Appleshaw, Hurstbourne Tarrant, Vernham Dean and Smannell and Enham.
28. Should the consultation on the potential closure of Hatherden Church of England Primary School be approved a draft timetable of activity is set out below:

Decision day – report seeking to obtain Approval to Consult	10 November 2021
Public Consultation – 4 weeks as per HCC policy	12 November – 10 December 2021
Report to ELMCS on consultation seeking approval to publish a Public Notice	14 January 2022
If approved, Publish notice – 4 weeks	21 January – 18 February 2022
Closing date for representations	18 February 2022
Cabinet Decision on closure – must be within 2 months from the end of consultation period	15 March 2022
If agreed, school would close	31 August 2022

Human Resources Implications

29. Should the proposal be agreed discussions will take place with the staff at Hatherden Church of England Primary School and the recognised trade unions.

Performance Impact

30. Hatherden Church of England Primary School has failed two Ofsted inspections and with no possibility of a sponsor being able to be secured by either the DfE or RSC to take on the running of the school, the improvements made through the support provided by the local authority will not be sustained, therefore standards will drop as soon as that support is removed.

REQUIRED CORPORATE AND LEGAL INFORMATION:

Links to the Strategic Plan

Hampshire maintains strong and sustainable economic growth and prosperity:	Yes
People in Hampshire live safe, healthy and independent lives:	Yes
People in Hampshire enjoy a rich and diverse environment:	Yes
People in Hampshire enjoy being part of strong, inclusive communities:	Yes

Section 100 D - Local Government Act 1972 - background documents

The following documents discuss facts or matters on which this report, or an important part of it, is based and have been relied upon to a material extent in the preparation of this report. (NB: the list excludes published works and any documents which disclose exempt or confidential information as defined in the Act.)

Document

Location

None

EQUALITIES IMPACT ASSESSMENT:

1. Equality Duty

The County Council has a duty under Section 149 of the Equality Act 2010 ('the Act') to have due regard in the exercise of its functions to the need to:

- Eliminate discrimination, harassment and victimisation and any other conduct prohibited by or under the Act with regard to the protected characteristics as set out in section 4 of the Act (age, disability, gender reassignment, marriage and civil partnership, pregnancy and maternity, race, religion or belief, sex and sexual orientation);
- Advance equality of opportunity between persons who share a relevant protected characteristic within section 149(7) of the Act (age, disability, gender reassignment, pregnancy and maternity, race, religion or belief, sex and sexual orientation) and those who do not share it;
- Foster good relations between persons who share a relevant protected characteristic within section 149(7) of the Act (see above) and persons who do not share it.

Due regard in this context involves having due regard in particular to:

- The need to remove or minimise disadvantages suffered by persons sharing a relevant protected characteristic that are connected to that characteristic;
- Take steps to meet the needs of persons sharing a relevant protected characteristic that are different from the needs of persons who do not share it;
- Encourage persons sharing a relevant protected characteristic to participate in public life or in any other activity in which participation by such persons is disproportionately low.

2. Equalities Impact Assessment:

See guidance at <https://hants.sharepoint.com/sites/ID/SitePages/Equality-Impact-Assessments.aspx?web=1>

Insert in full your **Equality Statement** which will either state:

- (a) *why you consider that the project/proposal will have a low or no impact on groups with protected characteristics or*
- (b) *will give details of the identified impacts and potential mitigating actions*

CLIMATE CHANGE IMPACT ASSESSMENTS

Climate Change Adaptation

The proposals set out in this report will have no impact on climate change and therefore no adaptation is required.

Carbon Mitigation

The proposals set out in this report will not require any form of carbon mitigation to be undertaken if approved.



Department
for Education

Regional Schools Commissioner's Office
South East and South London
Trafalgar House
1 Bedford Park
Croydon, CR0 2AQ

Email: RSC.SESL@education.gsi.gov.uk

Brian Pope
Assistant Director, Education and Inclusion
Hampshire County Council and Isle of Wight Council
3rd Floor
EII Court North
Winchester
SO23 8UG

Via email: brian.pope@hants.gov.uk

23 July 2021

Dear Brian,

Hatherden CofE Primary School

I understand that discussions have taken place between the Department, Hampshire CC and the Diocese about the future of Hatherden CofE Primary School. I believe it was mutually agreed that the school may not be considered viable, and as such, closure should now be explored.

This letter is to confirm that, under the current circumstances, I am content for Hampshire CC to carry out its consultation around closure.

Yours sincerely,

CLAIRE BURTON
Regional Schools Commissioner for the South East and South London

This page is intentionally left blank

Steve Crocker
Director of Children's Services
Hampshire County Council
Winchester
SO23 8UG

2nd September 2021

Dear Steve

As you are aware Hatherden Church of England primary school has been sitting on an academy order for two years.

The Regional Schools' Commissioner has been unable to source a Multi Academy Trust to run the school, and we remain concerned about the capacity within the school to flourish without the current intensive LA and Diocesan support.

With the haemorrhaging of pupils the viability of the school is a concern. We have worked closely with senior colleagues at the LA to explore options.

There is a surplus of places in schools locally, including Church of England schools, therefore we have to consider ongoing educational, financial and other factors. We have discussed with LA officers the possible closure of the school, and are in agreement that a formal consultation should begin.

We remain committed to work with the LA to ensure that children at the school continue to receive the best possible teaching and leadership despite the current context, which is unlikely to be reversed.

Yours faithfully

Jeff Williams
Director of Education

This page is intentionally left blank

HAMPSHIRE COUNTY COUNCIL

Decision Report

Decision Maker:	Executive Lead Member for Children's Services
Date:	10 November 2021
Title:	North Baddesley Infant School Age Range
Report From:	Director of Children's Services

Contact name: Tracey Messer – Service Manager Childcare Development

Tel: 01962 847070

Email: Tracey.messer@hants.gov.uk

Purpose of this Report

1. The purpose of this report is to provide feedback on the statutory public notice in relation to the proposal for North Baddesley Infant School to take children from age 2 years old and to deliver nursery provision from 8am to 6pm.
2. This report seeks approval for the age range of the school to be lowered.

Recommendations

3. That approval be given to the following proposals, published by Hampshire County Council under Section 19 (1) of the Education and Inspections Act 2006:
 - **To make a prescribed alteration to North Baddesley Infant School, Botley Road, North Baddesley, Southampton, SO52 9EE, to provide nursery provision for up to 40 places for children from 2 years to 4 years old, commencing with 24 places with effect from 1 January 2022 and with a requirement to consult with the Council prior to any further expansion of places.**

Executive Summary

1. This report outlines the rationale, background and outcome of the Public Notice to the request to lower the age range North Baddesley Infant School.
2. North Baddesley Infant School is a community school currently approved to take children of school age from Year R to Year 2. The PAN for the school is

currently 90 with maximum capacity of 270. The governing body of the school is seeking to:

- (a) Lower the school age range to 2-year-olds; and
 - (b) Directly manage a new early years' facility as part of the school.
3. The North Baddesley Infant School proposal is to open a new provision. The school leadership team has reviewed its management, financial and operational arrangements, and the governors at its meeting on 24 June 2021 gave full agreement to the proposal.
 4. The school has previously offered the childcare opportunity to the open market. This resulted in only one interested provider who went through the selection process; however, they have chosen not to take up the opportunity to deliver the childcare provision. The school has not considered to offer it out again due to the poor response previously.
 5. The lowered age range will be accommodated in the multi-purpose building which is currently sited on the school campus which has full facilities to accommodate younger children. The accommodation was successfully purchased and installed via a community grant and the remaining costs were supported by the school who recognised the demand for wrap around care by their working parents.
 6. There is no cost to Hampshire County Council associated with this proposal.
 7. A public consultation was held from 3 September to 1 October 2021.
 8. There have been three objections raised and these have been resolved.
 9. A copy of the Public Notice is appended (Appendix 2). The County Council has complied with all statutory requirements relating to the publication of the Public Notice.

STATUTORY PUBLIC CONSULTATION

10. *The Making Significant Changes ('prescribed alterations') to Maintained Schools* (publishing.service.gov.uk) guidance sets out the process to be followed.
11. As a Public Notice was published in the press on 3 September 2021 with the consultation period closing 1 October 2021.

Contextual Information

12. North Baddesley Infant School had previously tendered out to the childcare market in December 2019 for an independent childcare provider to deliver childcare onsite. Due to the impact of the Covid-19 pandemic, the successful organisation has confirmed to the school they do not wish to enter the lease

arrangement. The school have not considered to offer it out again due to the poor response previously. During the 2019 tender process, there was one local provider who was concerned that further provision in the local area would adversely affect their business operation.

13. A new childcare provision on site for 2 to 4-year-olds will allow further choice of childcare to parents in the North Baddesley ward and support those also with older siblings at the school. There is a preschool for ages 2-4 years which already shares the same site of the school. The new provision will have distinct and different childcare offer and childcare delivery model. There is current partnership working between the current onsite provision and the school. In the ward, there is one full day care provider, four early years funding approved childminders and three term time preschools, including the current provider on site.
14. Having a school directly managed nursery will not make North Baddesley Infant an all through school. Parents of children attending the nursery will still be required to apply for their place in Year R through the usual admission arrangements. There is scope for children who are eligible for either early years pupil premium, or the service premium, for admission authorities to give priority in their oversubscription criteria where these children: a) are in a nursery class which is part of the school; or b) attend a nursery that is established and run by the school. There will be requirement for the nursery to be named in the admission arrangements and its selection must be transparent and made on reasonable grounds. Confirmation from the school to take up this admission arrangement will be established once there is formal and final decision is made on the lowering age range.
15. The Small Area Population Forecast for the ward indicates a 20% increase in children aged from birth to four years old over the next six years because of new housing developments. This new provision therefore helps to provide sufficient childcare places for the anticipated population growth.
16. A review of the childcare population and take up of childcare in North Baddesley has confirmed a need for 42 places.
17. The review also outlined that 40% of the children living in North Baddesley take up childcare provision outside of that local area in the New Forest, Eastleigh, Fareham and Winchester. There were 60% of children from North Baddesley aged two who took up some provision. Whilst this was 10% lower than the average for Hampshire (CSA 2019), it represents a high demand for parental fee paying childcare. There were 28% of the Year R cohort for 2021 who had taken up an extended entitlement provision as preschool/full day care indicating demand from working parents.
18. The North Baddesley Infant School proposal to open a new provision supports the growth of child population in the ward over a six-year period to meet potential demand.

Finance

19. The key to successful early years provision is the ability to be financially sustainable through the limitations of the early years' education funding, through setting appropriate parental fees for additional services together with allowable consumable charges. It is therefore important that both the school governing body and leadership team regularly review their business plans, financial forecasting and establish close monitoring of the income and expenditure with good debt management. It is also recommended that the income and expenditure of the proposed nursery is kept separate to the School's main budget.
20. North Baddesley Infant School has undertaken its own due diligence and understands that the nursery income can only be met from early years education claims and parental fee income. At its meeting of 24 June 2021, the Governing Body approved the financial plans for the lowered age group. The Governing Body understands its financial responsibilities regarding this age range change and the budgetary requirements.

Human Resources Implications

21. As North Baddesley Infant School is setting up a new provision, there are no TUPE implications. The school has identified and can put in place appropriate staffing arrangements from January 2022 to support this proposal..
22. The school is responsible for ensuring employment of appropriate staff for the nursery and have taken advice from schools HR support in considering this proposal.

Performance Impact

23. North Baddesley Infant School recognises that delivering an early year's provision will offer an early intervention approach to children with SEN and implement early support prior to children starting school, thus allowing a smooth transition with identified support in place for children who through the school admission process move through to Year R.
24. The school is responsible for meeting all the regulatory requirements of the Statutory Framework for the Early Years Foundation Stage and any subsequent OFSTED inspection.

Consultation and Equalities

25. On 6 August 2021, the Executive Lead Member for Children's Services approved a statutory four week public consultation in respect of this proposal.
26. As part of the consultation process, the school published a "statement of intent" publicising a consultation drop-in session on 13 September. This statement went out to all the parents of the infant and junior schools. The

headteacher also spoke to the three local preschools and the full day nursery in North Baddesley.

27. There were three attendees to the drop-in consultation event, one of whom was representing a local preschool, one representing the junior school and one a prospective parent. At the drop-in session the results of the school's own market research survey were made available, and this outlined 52.9% of the respondents (34) were interested in taking up a place, with 23.5% as a maybe and 23.5% saying no. 34.5% of the respondents were interested in the full 8am to 6pm offer proposed.
28. During the statutory consultation there have been three respondents indicating objection to the proposal, one of whom is representing Holly Tree Preschool. The objections (summarised in Appendix 1 of this report) were concerned with the anticipated start for the nursery; concerns of increase footfall and traffic; queries regarding the accuracy of forecast numbers of children and concern that there was reliance on a housing development in the Hoe Lane area that had not yet started; suitability of the multipurpose building for early years and access to outdoor space. The school has reviewed all objections and provided approaches and resolutions to address.
29. An Equalities Impact Assessment is attached to this report (Appendix 3). The proposal will provide inclusive access to early years education and therefore has a positive impact.

Conclusion

30. The North Baddesley Infant School proposal to open a new early years provision supports the growth of child population in the ward over a six year period and supports potential growth in demand for services. The school's previous approach in offering the facility to the open market was not successful. The school now wish to manage this directly to provide teacher led early years' service. As the school is a local authority community school, the local authority was required to approve a statutory consultation and Public Notice to be undertaken before any decision can be confirmed.
31. There were three submitted objections. All have been considered. The main objection was concerning that new provision commencing prior to the housing and it is concluded that whilst the school will have the capacity to develop up to 40 places aged 2 to 4 years, the school has confirmed they will start provision of 24 places and will only change this subject to local demand.

Recommendation

- 35 The County Council supports the North Baddesley Infant School's proposal to deliver and manage early years provision for children aged 2 years to 4 years which will help support the assessed growth in places to meet the County Council's childcare sufficiency statutory duty.

36 North Baddesley Infant School limits its size of provision to 24 and seeks permission from the council prior to enlarging beyond 24 to 40 places.

REQUIRED CORPORATE AND LEGAL INFORMATION:

Links to the Strategic Plan

Hampshire maintains strong and sustainable economic growth and prosperity:	Yes
People in Hampshire live safe, healthy and independent lives:	Yes
People in Hampshire enjoy a rich and diverse environment:	Yes
People in Hampshire enjoy being part of strong, inclusive communities:	Yes

Other Significant Links

Links to previous Member decisions:		
<u>Title</u>	<u>Reference</u>	<u>Date</u>
DCS and Executive Member		6 August 2021
Direct links to specific legislation or Government Directives		
<u>Title</u>	<u>Date</u>	
<i>The Making Significant Changes ('prescribed alterations') to Maintained Schools</i> (publishing.service.gov.uk)	October 2018	

Section 100 D - Local Government Act 1972 - background documents

The following documents discuss facts or matters on which this report, or an important part of it, is based and have been relied upon to a material extent in the preparation of this report. (NB: the list excludes published works and any documents which disclose exempt or confidential information as defined in the Act.)

<u>Document</u>	<u>Location</u>
None	

EQUALITIES IMPACT ASSESSMENT:

- Equality Duty

The County Council has a duty under Section 149 of the Equality Act 2010 ('the Act') to have due regard in the exercise of its functions to the need to:

- Eliminate discrimination, harassment and victimisation and any other conduct prohibited by or under the Act with regard to the protected characteristics as set out in section 4 of the Act (age, disability, gender reassignment, marriage and civil partnership, pregnancy and maternity, race, religion or belief, sex and sexual orientation);
- Advance equality of opportunity between persons who share a relevant protected characteristic within section 149(7) of the Act (age, disability, gender reassignment, pregnancy and maternity, race, religion or belief, sex and sexual orientation) and those who do not share it;
- Foster good relations between persons who share a relevant protected characteristic within section 149(7) of the Act (see above) and persons who do not share it.

Due regard in this context involves having due regard in particular to:

- The need to remove or minimise disadvantages suffered by persons sharing a relevant protected characteristic that are connected to that characteristic;
- Take steps to meet the needs of persons sharing a relevant protected characteristic that are different from the needs of persons who do not share it;
- Encourage persons sharing a relevant protected characteristic to participate in public life or in any other activity in which participation by such persons is disproportionately low.

- Equalities Impact Assessment:

Equality and diversity objectives will be considered on an individual project basis by conducting Equality Impact Assessments and are not considered at this stage or within this report.

Appendix 1

RESPONSES TO THE CONSULTATION AND OBJECTIONS RAISED AND RESOLUTION.

Date Received	Comment Author	Nature of Comment	Response Date	Response	Response Detail
04/09/2021	Respondent 1	Request copy of the complete proposal	10/09/2021	Sent a copy of the full proposal	No further response needed
05/09/2021	Respondent 2	Request copy of the complete proposal	10/09/2021	Sent a copy of the full proposal	See below
07/09/2021	Respondent 3	Request copy of the complete proposal & Question	10/09/2021	Sent a copy of the full proposal	See below
09/09/2021	Respondent 2	Chasing up a copy of the complete proposal	10/09/2021	Sent a copy of the full proposal	No further response needed
14/09/2021	Respondent 4	Comment on impact of proposal on local EY settings	22/09/2021	HT drafted response sent from SDT Inbox	No further response needed.
28/09/2021	Respondent 3	Objection to proposal	(29/09/21)	Acknowledgement Only	HCC Letter sent 6/10/2021 ref to Para 33 in this report.
30/09/2021	Respondent 1	Local traffic / outdoor access / need for local EY places	(01/10/21)	Acknowledgement Only	HCC Letter sent 6/10/2021 ref to Para 33 in this report.
01/10/2021	Respondent 5	Objection to proposal as Chair at Hollytree Pre School	(01/10/21)	Acknowledgement Only	HCC Letter sent 6/10/2021 ref to Para 33 in this report.
01/10/2021	Respondent 5	Objection to proposal as private member of the public	(01/10/21)	Acknowledgement Only	HCC Letter sent 6/10/2021 ref to Para 33 in this report.

05/10/2021	Respondent 6	Potential for local preschool closures and traffic in roads around the school	**Comment submitted outside consultation period**	HCC Letter sent 6/10/2021 ref to Para 3 in this report.
------------	--------------	---	---	---

All respondents to the consultation have received an acknowledgement and a detailed reply to responding to the issues raised. Below is a table summarising the objection and response made.

Summary of Objections	Summary Response
Concern of starting in January 2022 at the school site.	Starting with 24 places only. Highlighted 28% of children coming into Year R having extended entitlement therefore outlining a need for early years to support working families.
Accuracy of the forecast child population and reliance on new Housing not yet started.	Confirmed that the age four had not been adjusted for Year R starts and reviewed the data. Confirmed revised number of places needed in the locality of 42 for the period 2020 to 2023. Confirmed by further review of the population and take up data for North Baddesley; making an adjustment to take account of 4 year olds in Year R from 2022; adjusted to take account of population not in provision at age three; and take up for twos This outlined: for 2020 – 2023 additional places: Parental fee funded 2 year olds and fund 2 year olds = 10 children; Population growth for three and four year olds = 22 children; three year olds not currently taking up childcare 10. Confirmed that 40% of children from North Baddesley take up provision outside of the area in New Forest, Eastleigh, Winchester and Fareham and outlined those neighbouring areas also have growth need and the proposal supports the wider child market and provide more local choice to reduce travel. Test Valley Borough Council have confirmed first occupations of the Hoe Lane Development are proposed to be mid-2022.
Suitability of Multipurpose Building for early years especially regarding toileting and free flow	School have measured the building in accordance with Early Years Foundation Stage Statutory Framework (EYFS) and the size allows for up to 40 places for children 2 years to 4 years. The statutory EYFS states a separate sleeping area for children aged 2 years and over is not required. The school have

<p>access to outdoors, and concerns for shared use.</p>	<p>confirmed they will be providing a soft furnished quiet area for rest periods.</p> <p>School has confirmed there is extensive outdoor areas at the school that fencing directly outside of multipurpose building will not impact the rest of the school.</p> <p>Prior to operating the school will have fenced off an area directly outside of the multipurpose building that is accessible from the proposed early years delivery space that will provide free flow to the outdoors.</p> <p>The school have confirmed they will be purchasing additional changing stations for the use of the preschool rooms to provide additional amenities to the two plus one accessible toilet already available in the multipurpose building.</p> <p>School has confirmed that it has flexibility in how it uses the whole site and has contingency plans for how the out of school breakfast and afterschool club can be operated when the preschool is in session.</p>
<p>Increased footfall and traffic to the site.</p>	<p>The school has confirmed a revised traffic management plan which addresses potential foot fall which will be managed through a staggered start and finish times approach and shared travel arrangements for families with children attend school.</p>

Appendix 2 – Public Notice



NORTH BADDESLEY INFANT SCHOOL, TEST VALLEY - REDUCTION IN AGE RANGE

1. Notice is hereby given in accordance with Section 19(1) of the Education and Inspections Act 2006, that Hampshire County Council intends to make a prescribed alteration to **NORTH BADDESLEY INFANT SCHOOL**, Botley Road, North Baddesley, Southampton, SO52 9EE (category of school – Community) with effect from 1 January 2022.
2. The PAN for the school is currently 90. It is proposed that the age range for the school is lowered to enable nursery children aged from 2 years to attend. The governing body of the school is seeking to lower the school age range to 2-year-olds and directly manage a new early years' facility as part of the school. Children attending the nursery will still be required to apply for their place in Year R through the usual admission arrangements.
3. The current capacity of the school is 270 and will be unaffected by the proposal. The current number of pupils registered at the school is 250. The current admission number for the school is 90 and is not affected by the school taking on the nursery which will be a separate capacity of 40 on the implementation of this proposal. There are no costs associated with this proposal.
4. Notice is an extract from the complete proposal. Copies of the complete proposal may be obtained from Martin Shefferd, Strategic Development Officer, Children's Services Department, EII Court North, Winchester, Hampshire SO23 8UG; telephone 0370 779 4892; e-mail: strategicplanningunit@hants.gov.uk
5. Within four weeks from the date of publication of these proposals, any person may object or make comments on the proposal by sending them to Martin Shefferd, Strategic Development Officer, Children's Services Department, EII Court North, Winchester, Hampshire SO23 8UG; telephone 0370 779 4892; e-mail: strategicplanningunit@hants.gov.uk

Dated: 3 September 2021

Carolyn Williamson
Chief Executive

Appendix 3

<https://www.hants.gov.uk/aboutthecouncil/equality/equality-impact-assessment/children-services>

This page is intentionally left blank